

# 3D TENDER®

HIGH PERFORMANCE RESEARCH & DEVELOPMENT



PRODUCT CATALOG 2017 - English

# HIGH QUALITY 3D TENDER

**3D TENDER**<sup>®</sup>  
HIGH PERFORMANCE RESEARCH & DEVELOPMENT

Semi-rigid polyester hull, aluminum hull, removable floors, ultra-lightweight dinghies with high pressure inflatable hull... The 3D TENDER range offers unrivaled choice of models to value / price on the market

## ENVIRONMENT

We pay a great attention to the respect of the environment during the production of 3D Tender boats. We make sure to use non-polluting process, energy economic respecting the health of employees and users. The choice of raw materials is also crucial since it allows to build very strong but also close to nature boats.

## FEATHERWEIGHT 3D TENDER

The aluminum hull boats bring their strength while giving them an unbeatable advantage in terms of weight. These boats can be powered by small engines, cheaper, more fuel efficient, reducing their CO<sub>2</sub> emissions.

## ALUMINIUM 3D TENDER

Aluminum is one of the only materials that can be recycled so without losing its unlimited qualities and properties .

3D Tender chose to use powder paint. These powders are electrically charged and are sprayed onto the prepared surfaces before placing in the oven. The finish is impeccable, the painted surfaces are smooth and shiny.

The powder paints bring considerable advantages compared to paintings conventional liquid:

- No volatile organic mixture
  - No solvent (no disk of the sun , pollution, etc ...)
  - No pollution, excess powder is easily collected by suction
- Time and curing temperature were significantly improved in order to reduce energy consumption of the process.

## TESTS CONDUCTED ON PAINTING

- Adhesion of primer (BS EN 12206-1)
- Thickness of coatings (ISO 2178)
- Grip paint / support (ISO 2409 and ISO 4624)
- Accelerated UV (ISO 11507)
- Accelerated salt spray (ISO 9227)
- Resistance to impact (ISO 6272)

## TESTS CONDUCTED ON TISSUES AND ASSEMBLIES

- Mechanical properties (ISO 1421, ISO 4674 and ISO 2411 )
- Assemblies Resistance to heat (ISO 6185)
- Sealed floats (ISO 6185)
- Accelerated UV (ISO 4892)



PATROL 650 HYPALON - Option : Jockey seat wings



PATROL 550 PVC BLACK - Option : Roll Bar + Seat - Rear trunk

## PATROL Limited Edition

The **Patrol Limited edition** are considered as the elite of semi-rigid in our range. It comes in 5 sizes all made of PVC thermo-welded or glued hot also available in Hypalon.

Thanks to the study of specific environmental constraints and research performance, the **Patrol Limited edition** was developed for professionals who want a boat to all events, tailored precisely to their requirements and needs.

Outsized reliability, with unmatched performance and capacity without limit.

Range suitable for Special Forces, rescue organizations, but also offshore industries, integration on yachts or expeditions and adventures).

## STANDARD EQUIPMENT

- Fabric PVC glued
- Self-bailing deck
- Anchor well
- Front box
- Lifting points & towing eyes
- Anti-slip deck
- Double Heavy duty rubbing strake
- Length keel guard
- Console & driver seat
- Double lifelines
- Carry handles
- Retractable Cleat
- Pump

### STANDARD CONSOLE AND SEAT

#### PATROL 650:

Console XL  
+  
Bolster seat XL



#### PATROL 600 & 550:

Console L  
+  
Bolster seat L



#### PATROL 530 & 560:

Console  
+  
Leaning post



PATROL 600 PVC FISHING - Option Roll Bar



PATROL 860 PVC

Available colors :

PVC :



Black



Grey fishing

Hypalon :



Dark grey / Grey

Model	PATROL 650	PATROL 600	PATROL 560	PATROL 550	PATROL 530	
Overall length (cm)	650	600	560	550	530	
Overall beam (cm)	250	240	213	240	213	
Inside length (cm)	530	475	430	430	403	
Inside beam (cm)	150	142	120	123	120	
Total weight* (Kg)	450	350	280	290	230	
Max. passengers	15	13	10	11	9	
Tube (cm)	57	57	49	57	49	
Number of airtight chambers	6	5	5	6	5	
Shaft	Long	Long	Long	Long	Long	
Max. power	150 HP	140 HP	100 HP	115 HP	90 HP	
Fuel tank	Optional 86L	Optional 86L	Optional 48L	Optional 48L	Optional 48L	
Console & Pilot seat	Standard	Standard	Standard	Standard	Standard	
PVC	Price**	11 999 €	10 999 €	8 499 €	8 999 €	7 999 €
Hypalon	Price**	14 999 €	13 999 €	10 499 €	11 499 €	10 399 €

\* A variation of +/- 10% is possible on all announced weights - \*\* Prices VAT included without shipping costs

Prices and technical data subject to change without notice.





Double front trunk



## PATROL

The **Patrol Limited edition** are considered as the elite of semi-rigid in our range. The models 760 and 860 have been designed for professionals who need a large and entirely customizable boat.

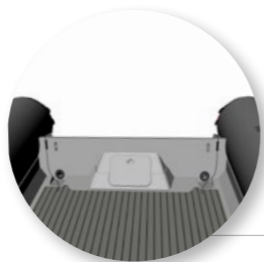
Thanks to the study of specific environmental constraints and research performance, the **Patrol** was developed for professionals who want a boat to all events, tailored precisely to their requirements and needs.

Outsized reliability, with unmatched performance and capacity without limit.

Range suitable for Special Forces, rescue organizations, but also offshore industries, integration on yachts or expeditions and adventures).

### STANDARD EQUIPMENT

- Fabric PVC
- Self-bailing deck
- Double front box
- Lifting points & towing eyes
- Anti-slip EVA deck
- Fuel tank
- Double Heavy duty rubbing strake
- Length keel guard
- Lifelines
- Carry handles
- Retractable Cleat



Self bailing deck  
Reinforced transom



Anti-slip EVA deck



Model	PATROL 860	PATROL 760
Overall length (cm)	860	760
Overall beam (cm)	292	292
Inside length (cm)	-	-
Inside beam (cm)	-	-
Total weight* (Kg)	1050	900
Max. passengers	20 (C) - 14 (B)	17 (C) - 12 (B)
Tube (cm)	55	55
Number of airtight chambers	6	6
Shaft	Simple XXL Double XL	Simple XXL Double XL
Max. power	500 HP	300 HP
Fuel tank	350 L	300 L
Console & Pilot seat	En option	En option
PVC	Price** 26 900 €	22 500 €
Hypalon	Price** 32 500 €	27 900 €

\* A variation of +/- 10% is possible on all announced weights - \*\* Prices VAT included without shipping costs

Prices and technical data subject to change without notice.





LUX 655



Sunbathing area



Locker(s) under sunbath



Removable picnic table



Rear bench  
Models 655 & 635



LUX 500



LUX 440



Model	LUX 655	LUX 635	LUX 550	LUX 500	LUX 440
Overall length (cm)	655	635	550	500	440
Overall beam (cm)	270	255	224	222	193
Inside length (cm)	-	-	-	-	-
Inside beam (cm)	-	-	-	-	-
Total weight* (Kg)	900	550	350	300	280
Max. passengers	12	10	9	8	7
Tube (cm)	45 / 58	54 / 58	46 / 52	46 / 52	46 / 52
Number of airtight chambers	6	5	5	5	3
Shaft	XL	Long	Long	Long	Long
Max. power	200 HP	140 HP	90 HP	80 HP	60 HP
Fuel tank capacity	100 L	80 L	80 L	80 L	60 L
Console & Seat	Standard	Standard	Standard	Standard	Standard
PVC	Price** 17 900 €	13 990 €	10 290 €	9 650 €	8 990 €
Hypalon	Price** 20 900 €	16 590 €	12 990 €	11 990 €	9 990 €

\* A variation of +/- 10% is possible on all announced weights - \*\* Prices VAT included without shipping costs  
Prices and technical data subject to change without notice.

Available colors :

PVC :  Dark grey / White

Hypalon :  Dark grey / White



## LUX

Our range of semi-rigid LUX as been studied to offer a maximum comfort in a boat that remain, sporty, elegant and perfectly adapted to family. Everything have been carefully calculated, from the deep V-hull that offer comfort and maneuverability, to the outstanding standard equipment.

Every models of the LUX range are delivered with a large sunbathing area and a removable picnic table. On models 440 to 550, the rear seat is modular with a «stand up» or «seat down» position, to offer a perfect combination between confort and space saving. The models 635 and 655 comes with a large rear bench

## STANDARD EQUIPMENT

- Fabric PVC
- Self-bailing deck
- Sunbathing area
- Bow roller
- Console
- Modular rear seat
- Fuel tank
- Picnic table
- Bow locker
- Lifting points & towing eyes
- Anti-slip deck
- Double Heavy duty rubbing strake
- Bow protection
- Pump, Repair kit



# XPRO

The **XPRO** range includes 6 models all made of PVC thermo-welded or glued hot also available in Hypalon.

Range completely modular, upgrade your boat according to your wishes and needs (driver seat, console and accessories are placed where you want). Fast boats, stable and easy to handle.

The range is ideal for fishing and family, the best quality / price ratio!

## STANDARD EQUIPMENT

- Fabric PVC glued or welded seams
- Anchor well
- Front box
- Lifting points & towing eyes
- Anti-slip deck
- Double Heavy duty rubbing strake
- Length keel guard
- Pump, paddles & repair kit
- Cover entire wintering
- Console & driver seat
- Double lifelines
- Carry handles
- Reinforcement of cones
- Pump, Repair kit

### STANDARD CONSOLE AND SEAT

#### XPRO 589 & 535:

Console  
+  
Bolster seat



#### XPRO 490 & 445:

Console  
+  
Seat



### OPTION XPRO replacing standard equipment

#### XPRO 589:

Console L + Bolster seat L  
+ 1 399 € VAT inc.



#### XPRO 490 & 445:

Console + Bolster seat  
+ 599 € VAT inc.



Model	XPRO 589	XPRO 535	XPRO 490	XPRO 445
Overall length (cm)	589	535	490	445
Overall beam (cm)	252	212	208	208
Inside length (cm)	472	368	335	303
Inside beam (cm)	133	101	101	101
Bow locker width (cm)	84	80	-	-
Stern height (cm)	127	119	114	112
Bow height (cm)	83	73	72	72
Total weight* (Kg)	400	234	178	167
Max. passengers	16	10	7	7
Max load (Kg)	1800	1350	880	800
Tube (cm)	57	52	52	52
Number of airtight chambers	6	6	6	6
Shaft	Long	Long	Long	Long
Max. power	120 HP	75 HP	60 HP	50 HP
Front locker	Standard	Standard	Standard	Standard
Fuel tank	Option 58 L	Option 58 L	Option 58 L	Option 58 L
Console & seat	Standard	Standard	Standard	Standard
PVC	Price**	9 499 €	6 499 €	5 499 €
Hypalon	Price**	11 999 €	8 499 €	7 499 €

\* A variation of +/- 10% is possible on all announced weights - \*\* Prices VAT included without shipping costs

Prices and technical data subject to change without notice.

Available colors :

PVC : Dark grey Black Hypalon : Grey / Light grey





## XPRO Heavy Duty

The **XPRO Heavy Duty** range is available in seven models all made in PVC thermo-welded or glued hot and offers an inflatable V-shaped hull with a removable aluminum floor.

This range offers an excellent compromise between comfort and safety, a quick start and a surprising interior space.

Comfortable and versatile boat for excursions, fishing trips or diving fabulous.

Partner at all times!

### STANDARD EQUIPMENT

- Fabric PVC glued or welded seams
- Anchor well
- Cover entire wintering
- 2 adjustable benches
- 2 oars
- 2 carrying bags
- 2 storage bags under the bench
- Pump
- Repair kit

### OPTION XPRO HEAVY DUTY

Dinghy wheels  
99 € VAT inc.



Model	HD 550	HD 500	HD 460	HD 420	HD 380	HD 360	HD 320
Overall length (cm)	550	500	460	420	380	360	320
Overall beam (cm)	208	193	190	190	170	168	151
Total weight* (Kg)	130	118	98	88	78	68	56
Max. passengers	10	9	8	7	6	5	5
Max load (Kg)	1300	1200	1100	1087	727	689	566
Tube (cm)	55	55	50	50	45	45	42
Number of airtight chambers	4+1	4+1	4+1	3+1	3+1	3+1	3+1
Shaft	Long	Long	Court	Court	Court	Court	Court
Max. power	45 HP	45 HP	40 HP	30 HP	20 HP	20 HP	15 HP
Dimensions en bag (cm)	149x79x49	133x69x39	133x69x39	131x66x39	121x66x38	107x66x38	107x66x38
PVC	Price**	3 099 €	2 829 €	2 399 €	2 099 €	1 899 €	1 599 €

\* A variation of +/- 10% is possible on all announced weights - \*\* Prices VAT included without shipping costs  
Prices and technical data subject to change without notice.

Available color :  Black





## XPRO RIB Aluminium

The **XPRO RIB** range includes 3 models all made of PVC thermo-welded or glued hot also available in Hypalon.

Combining a sporty and elegant design, the **XPRO RIB** is ideal for those who need a comfortable and lightweight boat. Each model is equipped with a rugged aluminum hull with a double floor and a front locker for storing the nurse.

These boats can achieve a good cruising speed with small engines and offer an important and significant fuel economy

### STANDARD EQUIPMENT

- Fabric PVC glued or welded seams
- Inflation valves
- Aluminum hull, anti corrosion treated
- Marine paint on aluminum powder
- Anchor well
- Front locker from 360 cm
- U-bolts of lifting and towing integrated to the hull
- Slip coating UV resistant marine
- Ultra wide band chafing
- Protection bow
- Double References
- Aluminum bench slide
- Pump, oars, repair kit



Front trunk on each models

### OPTION

Jockey console  
999 € VAT inc.



Dinghy wheels  
99 € VAT inc.



Model	XPRO 420	XPRO 415	XPRO 390
Overall length (cm)	420	415	390
Overall beam (cm)	187	187	186
Inside length (cm)	293	289	272
Inside beam (cm)	89	89	86
Bow locker width (cm)	67	67	67
Stern height (cm)	103	103	103
Bow height (cm)	67	63	58
Total weight* (Kg)	128	89	69
Max. passengers	8	8	7
Max load (Kg)	900	860	700
Aluminium Thickness (mm)	4 / 5	2,5 / 3	2,5 / 3
Tube (cm)	50	50	45
Number of airtight chambers	4	3	3
Shaft	Long	Long	Long
Max. power	60 HP	25 HP	25 HP
Front locker	Standard	Standard	Standard
Console & seat	Option	Option 1	Option 1
PVC	Price** 4 599 €	2 999 €	2 799 €
Hypalon	Price** 6 999 €	4 999 €	4 599 €

\* A variation of +/- 10% is possible on all announced weights - \*\* Prices VAT included without shipping costs

Prices and technical data subject to change without notice.

Available colors :

Hypalon : Neptune grey Dark grey Black







## ULTRALIGHT RIB Aluminium

### Rigid schedules ultra lightweight aluminium!

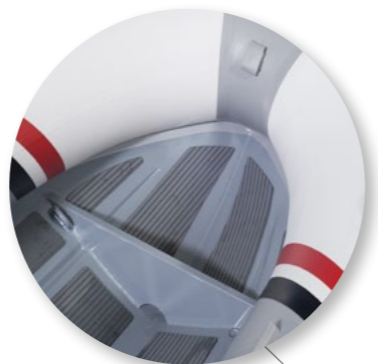
The Ultra Light RIB range is available in six models all made of PVC thermo-welded or glued hot also, available in Hypalon.

Very light, with a very pronounced V shape that provides stability and exceptional passing through the waves and a navigation dry. Hull designed to withstand shock and abrasion associated with rocks, coral and sandy beach. Models 330 and 360 are equipped with a double front trunk to store your nurse.

**Incredibly rugged and lightweight!**

## EQUIPEMENT STANDARD

- Fabric PVC welded seams
- Aluminum hull, anti corrosion treated
- Marine paint on aluminum powder
- Front storage box on each models
- Double front box on models 330 and 360
- U-bolts of lifting and towing integrated in the hull
- Eva pads anti-slip on the entire deck
- Ultra wide band chafing
- Protection bow
- Aluminum bench
- Pump
- Oars



Separation on models 250 to 310



Double front box on models 330 and 360

## OPTION

### Dinghy wheels

99 € VAT inc.



Model	UL 360	UL 330	UL 310	UL 290	UL 270	UL 250	
Overall length (cm)	360	330	310	290	270	250	
Overall beam (cm)	154	154	154	154	154	154	
Inside length (cm)	266	246	227	209	189	170	
Inside beam (cm)	76	76	76	76	76	76	
Hull angle (degree)	14	14	14	14	14	14	
Aluminium Thickness (cm)	0,25	0,25	0,25	0,25	0,25	0,25	
Total weight* (Kg)	49	41	34	31	28	25	
Category	C	C	D	D	D	D	
Maximum number of passengers	6	6	5	4	4	3	
Maximum load (Kg)	600	550	500	450	450	350	
Tube (cm)	39	39	39	39	39	39	
Shaft	Short	Short	Short	Short	Short	Short	
Maximum power	25 HP	20 HP	15 HP	10 HP	10 HP	8 HP	
Front trunk	Double	Double	Separation	Separation	Separation	Se paration	
Package dimensions (LxIxh cm)	300x110x70	280x110x70	260x110x70	245x110x70	228x110x70	211x110x70	
PVC	Price**	2 290 €	1 950 €	1 840 €	1 730 €	1 590 €	1 490 €
Hypalon	Price**	3 190 €	2 790 €	2 650 €	2 490 €	2 290 €	1 990 €

\* A variation of +/- 10% is possible on all announced weights - \*\* Prices VAT included without shipping costs


Prices and technical data subject to change without notice.

Available colors :

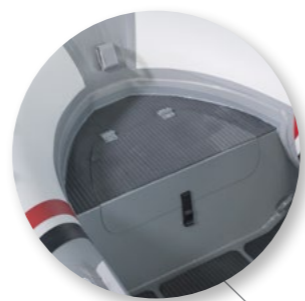
PVC :  Olive / White

 Grey / White

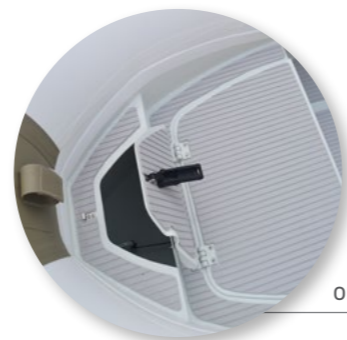
Hypalon :  Grey / White

 Dark grey / Light grey





Front trunk  
on all models



Double front box  
on models above 300



## ULTIMATE RIB Aluminium

### Semi-rigid tender in Aluminium, light and robust !

Each model is equipped with a double floor in aluminium, you therefore have a flat deck which is covered with an anti-slip EVA pads for a perfect confort. Each model also come with a front box : simple box on models 240 to 280; Double box on models 300 to 420.

Each models over 280 can be equipped with a console / pilot seat.

### STANDARD EQUIPMENT

- Fabric PVC welded seams
- Aluminum hull, anti corrosion treated
- Marine paint on aluminum powder
- Front storage box on each models
- Double front box on models over 300 cm
- U-bolts of lifting and towing integrated in the hull
- Eva pads anti-slip on the entire deck
- Ultra wide band chafing
- Protection bow
- Aluminum bench
- Pump
- Oars

### OPTION



Console / Pilot Seat : 890€<sup>VAT inc.</sup>

For all models above 280

Model	UT 420	UT 390	UT 360	UT 340	UT 320	UT 300	UT 280	UT 260	UT 240
Overall length (cm)	420	390	360	340	320	300	280	260	240
Overall beam (cm)	201	170	170	154	154	154	154	154	154
Inside length (cm)	318	299,5	267	251	233	216	198	180	161
Inside beam (cm)	105	80	80	76	76	76	76	76	76
Hull angle (degree)	20	14	14	14	14	14	14	14	14
Aluminium Thickness (cm)	0,3	0,25	0,25	0,25	0,25	0,25	0,25	0,25	0,25
Total weight* (Kg)	122	69	67	50	46	43	40	37	34
Category	C	C	C	C	C	D	D	D	D
Maximum number of passengers	8	7	6	6	5	5	4	4	3
Maximum load (Kg)	850	700	650	550	500	450	400	350	300
Tube (cm)	48	45	45	39	39	39	39	39	39
Shaft	Long	Short	Short	Short	Short	Short	Short	Short	Short
Maximum power	25 HP	25 HP	25 HP	20 HP	20 HP	15 HP	15 HP	10 HP	8 HP
Front trunk	Double	Double	Double	Double	Double	Double	Simple	Simple	Simple
Package dimensions (LxIxH cm)	365x135x106	338x115x80	315x115x80	285x110x70	275x110x70	260x110x70	230x110x70	220x110x70	195x110x70
PVC	Price** 3 690 €	2 990 €	2 490 €	2 290 €	2 050 €	1 990 €	1 890 €	1 750 €	1 690 €
Hypalon	Price** 5 190 €	4 490 €	3 790 €	3 090 €	2 690 €	2 590 €	2 490 €	2 350 €	2 250 €

\* A variation of +/- 10% is possible on all announced weights - \*\* Prices VAT included without shipping costs


Prices and technical data subject to change without notice.

Available colors :

PVC :  Olive / White

 Grey / White

Hypalon :  Grey / White

 Dark grey / Light grey





Double front trunk on each model

## STEALTH RIB Aluminium

### Semi-rigid in aluminium reinforced !

With its new elegant design, the Stealth range is perfect for anyone who need a craft constructed with reinforced aluminium. These boats will also give you very good cruising speed with low power engine.

Each model is equipped with a double floor in aluminium, you therefore have a flat deck which is covered with an anti-slip EVA pads for a perfect confort. Each model also come with a double front box to stock anchorage and fuel tank.

### STANDARD EQUIPMENT

- Fabric PVC welded seams
- Aluminum hull, anti corrosion treated
- Marine paint on aluminum powder
- Double front box on each models
- U-bolts of lifting and towing integrated in the hull
- Eva pads anti-slip on the entire deck
- Ultra wide band chafing
- Protection bow
- Aluminum bench
- Pump
- Repair kit
- Oars

### OPTION



Console + Leaning Post : + 1290€

For all models from 390 to 550

Model	ST 550	ST 500	ST 460	ST 420	ST 390	ST 360
Overall length (cm)	550	500	460	420	390	360
Overall beam (cm)	220	220	201	201	190	190
Inside length (cm)	426	379	362,5	318	299	259
Inside beam (cm)	118	118	105	105	94	94
Hull angle (degree)	24	24	20	20	22	22
Aluminium Thickness (cm)	0,4	0,4	0,4	0,4	0,4	0,3
Total weight* (Kg)	240	220	171	137	91	-
Category	C	C	C	C	C	C
Maximum number of passengers	12	11	9	8	7	6
Maximum load (Kg)	1350	1000	900	800	700	600
Tube (cm)	51	51	48	48	48	48
Shaft	Long	Long	Long	Long	Long	Long
Maximum power	70 HP	70 HP	60 HP	50 HP	50 HP	25 HP
Front trunk	Double	Double	Double	Double	Double	Double
Package dimensions (LxIxH cm)	500x145x112	425x145x112	405x135x106	380x135x106	360x115x80	324x115x80
PVC	Price** 5 790 €	5 350 €	5 050 €	4 590 €	3 490 €	2 950 €
Hypalon	Price** 8 390 €	7 450 €	6 850 €	6 390 €	4 950 €	4 150 €

\* A variation of +/- 10% is possible on all announced weights - \*\* Prices VAT included without shipping costs

Prices and technical data subject to change without notice.

Available colors : PVC : Grey / White

Hypalon : Grey / White Dark grey / Light grey





## SURFACE RIB Aluminium

### Speed, comfort and reliability !

New model design in collaboration with the French architect Tanguy Le Bihan. The Surface have a design of hull entirely new with over 40 degree of progressive V to offer high speed and unmatched seaworthiness for a small tender.

### STANDARD EQUIPMENT

- Fabric PVC welded seams
- Aluminum hull, anti corrosion treated
- Marine paint on aluminum powder
- Double front storage box
- U-bolts of lifting and towing integrated in the hull
- Eva pads anti-slip on the entire deck
- Ultra wide band chafing
- Protection bow
- Aluminum bench
- Pump
- Repair kit
- Oars

### OPTION



Console / Pilot seat : 890€



Double front box

New hull design  
Over 40° of progressive V



Model	SF 330
Overall length (cm)	330
Overall beam (cm)	162
Inside length (cm)	246
Inside beam (cm)	80
Hull angle (degree)	-
Aluminium Thickness (cm)	0,3
Total weight* (Kg)	-
Category	D
Maximum number of passengers	6
Maximum load (Kg)	-
Tube (cm)	41
Shaft	Court
Maximum power	25 HP
Front trunk	Double
Package dimensions (LxIxh cm)	290x1145x78
PVC	Price** 2 690 €
Hypalon	Price** 3 390 €

\* A variation of +/- 10% is possible on all announced weights - \*\* Prices VAT included without shipping costs

Prices and technical data subject to change without notice.

Available colors :

PVC :  Grey / White

Hypalon :  Grey / White  Dark grey / Light grey





Neoprene cover



Front trunk



## LUX

### Semi rigid tender with aluminium hull, front locker and protective cover in neoprene.

The LUX range is composed by 3 models all equipped with a front locker and a removable protective cover in neoprene for tube to ensure an optimal longevity.

Its hull has been designed in aluminium with a pronounced V-shape and a flat deck to offer the perfect balance between lightness, durability and seaworthiness.

### STANDARD EQUIPMENT

- Fabric PVC glued or welded seams
- White protective cover in neoprene
- Inflation valves
- Aluminium hull, anti corrosion treated
- Marine paint on aluminium powder
- Anchor well
- Front locker
- U-bolts of lifting and towing integrated to the hull
- Protective rubber
- Aluminium bench
- Pump, oars, repair kit

### OPTION

Dinghy wheels  
99 € VAT inc.



Available color : ■ Red

Model	LUX 325	LUX 300	LUX 280	
Overall length (cm)	325	300	280	
Overall beam (cm)	156	155	140	
Inside length (cm)	225	195	193	
Inside beam (cm)	68	68	63	
Bow locker width (cm)	57	57	50	
Stern height (cm)	48	48	46	
Bow height (cm)	85	85	76	
Total weight* (Kg)	43	37	36	
Max. passengers	4,5	4	3,5	
Max load (Kg)	550	500	450	
Tube (cm)	42	42	42	
Number of airtight chambers	3	3	3	
Shaft	Court	Court	Court	
Max. power	15 HP	10 HP	10 HP	
Bow locker	Standard	Standard	Standard	
Bow roller	Standard	Standard	Standard	
PVC	Price **	1 999 €	1 699 €	1 499 €

\* A variation of +/- 10% is possible on all announced weights - \*\* Prices VAT included without shipping costs  
Prices and technical data subject to change without notice.

**3D TENDER**  
HIGH PERFORMANCE RESEARCH & DEVELOPMENT



Storage backpack



FROM ONLY  
9,6 KG!



## SUPERLIGHT TWIN AIR

3D TENDER developed the SUPERLIGHT TWIN AIR range to fit the expectations of pleasure boaters. Its high pressure floor with honeycomb construction as well as the materials used ensure the best balance between superlight weight, durability and ease of use.

Storage on transportation are also facilitated, thanks to an adapted backpack.

### STANDARD EQUIPMENT

- High pressure inflatable floor with honeycomb construction
- Aluminium bench
- Oars
- Pump
- Repair kit
- Backpack for storage and transport

Model	TWA290	TWA270	TWA250	TWA230	TWA200	TWA180	TWA160
Overall length (cm)	290	270	250	230	200	180	160
Overall beam (cm)	136	135	135	134	131	129	129
Inside length (cm)	234	215	195	177	145	126	106
Inside beam (cm)	67	67	67	66	63	62	61
Total weight* (Kg)	16,9	15,8	14,5	13,8	11,9	10,8	9,6
Max. passengers	4	3,5	3	2	2	1,5	1
Max load (Kg)	510	484	450	350	250	200	180
Tube (cm)	34-40	34-40	34-40	32-36	32-35	32-35	30
Number of airtight chambers	3+1	3+1	3+1	2+1	2+1	2+1	2+1
Shaft	Court	Court	Court	Court	Court	Court	Court
Max. power	10 HP	7.5 HP	7.5 HP	4 HP	3.5 HP	3.5 HP	2.5 HP
Dimensions in bag (cm)	98x48x28	98x48x28	98x48x28	90x45x28	90x45x28	90x45x28	90x45x26
PVC	Price** 949 €	899 €	799 €	699 €	649 €	599 €	549 €

\* A variation of +/- 10% is possible on all announced weights - \*\* Prices VAT included without shipping costs  
Prices and technical data subject to change without notice.



Storage backpack



FROM ONLY  
6,5 KG!



## SUPERLIGHT TWIN ROUND AIR

The use premium materials extremely light, and the absence of transom was the key elements to design the SUPERLIGHT TWIN ROUND AIR, which is the lightest tender available in the market. Once folded, it is also the smallest one to fit in small trunks.

### STANDARD EQUIPMENT

- High pressure inflatable floor with honeycomb construction
- Motor support
- Aluminium bench
- Oars
- Pump
- Repair kit
- Backpack for storage and transport

Model	TWRA250	TWRA235	TWRA200	TWRA180	TWRA160
Overall length (cm)	250	235	200	180	160
Overall beam (cm)	133	133	114,5	101,5	100,5
Inside length (cm)	178	163	134	123	103
Inside beam (cm)	61	61	48,5	44,5	43,5
Total weight* (Kg)	12,2	11,8	9,2	7	6,5
Max. passengers	3	2	1,5	1	1
Max load (Kg)	400	350	250	200	180
Tube (cm)	36	36	33	28,5	28,5
Number of airtight chambers	2	2	2	2	2
Shaft	Court	Court	Court	Court	Court
Max. power	6 HP	5 HP	3.5 HP	2.5 HP	2 HP
Dimensions in bag (cm)	70x45x32	70x45x32	70x45x30	70x45x27	70x45x26
PVC	Price** 749 €	649 €	619 €	569 €	509 €

\* A variation of +/- 10% is possible on all announced weights - \*\* Prices VAT included without shipping costs  
Prices and technical data subject to change without notice.





FROM ONLY  
19 KG!



Protective neoprene cover



Storage backpack

## SUPERLIGHT TWIN VIB AIR

With its V-shaped inflatable hull, the **Superlight Twin VIB Air** has been designed for boaters who look for speed and confort especially in difficult weather conditions. The tender is delivered with 2 disposable protective covers in neoprene, One black and one white, you can easily change the color of your boat.

### STANDARD EQUIPMENT

- High pressure inflatable floor with honeycomb construction
- 2 protective cover in neoprene
- Aluminium bench
- Oars
- Pump
- Repair kit
- Backpack for storage and transport

Model	TWVA330	TWVA300	TWVA280	TWVA250	TWVA210
Overall length (cm)	330	300	280	250	210
Overall beam (cm)	153	153	153	150	131
Inside length (cm)	216	185	183	155	140
Inside beam (cm)	68	68	68	68	60
Total weight* (Kg)	34	29	25	22	19
Max. passengers	4,5	4	4	3	2
Max load (Kg)	566	510	500	450	250
Tube (cm)	42	42	42	42	36
Number of airtight chambers	3+1	3+1	3+1	2+1	2+1
Shaft	Court	Court	Court	Court	Court
Max. power	15 HP	10 HP	10 HP	6 HP	3.5 HP
Dimensions in bag (cm)	90x45x40	90x45x35	90x45x32	90x45x30	90x45x28
PVC	Price** 1 399 €	1 099 €	999 €	899 €	799 €

\* A variation of +/- 10% is possible on all announced weights - \*\* Prices VAT included without shipping costs  
Prices and technical data subject to change without notice.

Available color :



Black



FROM ONLY  
19 KG!



Storage backpack

## WORLD TRAVEL

3D TENDER developed his range to fit the expectations of pleasure boaters. His conical tubes bring a maximum of floatability. The storage and transportation are also facilitated, thanks to the adapted backpack.

### STANDARD EQUIPMENT

- Slatted floor
- Aluminium bench
- Oars
- Pump
- Repair kit
- Backpack for storage and transport

Available color :



Black

Model	WT235	WT200
Overall length (cm)	235	200
Overall beam (cm)	131	131
Inside length (cm)	183	147
Inside beam (cm)	60	60
Total weight* (Kg)	21	19
Max. passengers	3	3
Max load (Kg)	350	350
Tube (cm)	37-32	37-32
Number of airtight chambers	2	2
Shaft	Court	Court
Max. power	4 HP	4 HP
Dimensions in bag (cm)	98x49x35	98x49x35
PVC	Price** 399 €	379 €

\* A variation of +/- 10% is possible on all announced weights - \*\* Prices VAT included without shipping costs  
Prices and technical data subject to change without notice.

### OPTION FOR FOLDABLE TENDERS

Dinghy wheels  
99 € VAT inc.





## TWIN V-Shape

A new tender with high pressure Drop Stitch floor forming a V-shape to offer an excellent seaworthiness.

Inflatable, ultra rigid, V-Shape hull and light, the TWIN V-Shape is without doubt the best product of our tender range.

### STANDARD EQUIPMENT

- High pressured V-Shaped Drop Sitch floor
- Aluminium bench
- Pump
- Repair kit
- Oars
- 4 inox lifting points
- Backpack for storage and transport



Storage backpack



Inflatable V-shaped hull

Model	TWV290	TWV270	TWV250	TWV230	TWV200	TWV180	TWV160	
Overall length (cm)	290	270	250	230	200	180	160	
Overall beam (cm)	136	135	135	134	131	129	129	
Inside length (cm)	234	215	195	177	145	126	106	
Inside beam (cm)	67	67	67	66	63	62	61	
Total weight* (Kg)	20,3	18,9	17,4	16,6	14,3	12,9	11,5	
Max. passengers	4	3,5	3	2	2	1,5	1	
Max load (Kg)	510	484	450	350	250	200	180	
Tube (cm)	34-40	34-40	34-40	32-36	32-35	32-35	30	
Shaft	Court	Court	Court	Court	Court	Court	Court	
Max. power	10 HP	7.5 HP	7.5 HP	4 HP	3.5 HP	3.5 HP	2.5 HP	
Dimensions in bag (cm)	98x48x28	98x48x28	98x48x28	90x45x28	90x45x28	90x45x28	90x45x26	
PVC	Price**	1 049 €	990 €	890 €	790 €	749 €	690 €	649 €

\* A variation of +/- 10% is possible on all announced weights - \*\* Prices VAT included without shipping costs  
Prices and technical data subject to change without notice.

Available colors :  Grey / White  Black / Grey

## TWIN EVA

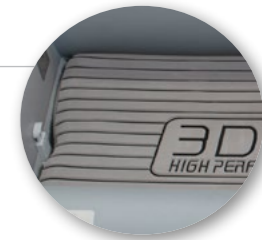
New design including a faux teack EVA floor, soft, non-skid and UV resistant to offer perfect confort and better durability. All of that in a super light tender. The floor is constructed with the Drop Stitch technologie and can be inflated with 1 BAR of pressure for super high rigidity.

### STANDARD EQUIPMENT

- High pressured Drop Sitch floor
- EVA Pads Faux teack
- Aluminium bench
- Pump
- Repair kit
- Oars
- 4 inox lifting points
- Backpack for storage and transport




Storage backpack



Anti-slip EVA pads

Model	TWE290	TWE270	TWE250	TWE230	TWA200	TWA180	TWA160	
Overall length (cm)	290	270	250	230	200	180	160	
Overall beam (cm)	136	135	135	134	131	129	129	
Inside length (cm)	234	215	195	177	145	126	106	
Inside beam (cm)	67	67	67	66	63	62	61	
Total weight* (Kg)	21,1	19,8	18,1	17,3	14,9	13,5	12	
Max. passengers	4	3,5	3	2	2	1,5	1	
Max load (Kg)	510	484	450	350	250	200	180	
Tube (cm)	34-40	34-40	34-40	32-36	32-35	32-35	30	
Shaft	Court	Court	Court	Court	Court	Court	Court	
Max. power	10 HP	7.5 HP	7.5 HP	4 HP	3.5 HP	3.5 HP	2.5 HP	
Dimensions in bag (cm)	98x48x28	98x48x28	98x48x28	90x45x28	90x45x28	90x45x28	90x45x26	
PVC	Price**	1 049 €	990 €	890 €	790 €	749 €	690 €	649 €

\* A variation of +/- 10% is possible on all announced weights - \*\* Prices VAT included without shipping costs  
Prices and technical data subject to change without notice.

Available color :  Grey / White  Black / Grey





## TWIN Hypalon

New tender constructed with Hypalon tube and a removable aluminium floor for unmatched durability.

The hull is also designed with an inflatable keel that create a V-Shape for great seaworthiness in all conditions.

### STANDARD EQUIPMENT

- Removable Aluminium floor
- Inflatable keel
- Aluminium bench
- Pump
- Repair kit
- Oars
- Backpack for storage and transport

Sac à dos de transport



Model	TWV290	TWV270	TWV250	TWV230
Overall length (cm)	290	270	250	230
Overall beam (cm)	136	135	135	134
Inside length (cm)	234	215	195	177
Inside beam (cm)	67	67	67	66
Total weight* (Kg)	23,4	22,3	21	20,3
Max. passengers	4	3,5	3	2
Max load (Kg)	510	484	450	350
Tube (cm)	34-40	34-40	34-40	32-36
Shaft	Court	Court	Court	Court
Max. power	10 HP	7.5 HP	7.5 HP	4 HP
Dimensions in bag (cm)	98x48x38	98x48x38	98x48x38	90x45x38
PVC	Price** 2 090 €	1 990 €	1 890 €	1 759 €

\* A variation of +/- 10% is possible on all announced weights - \*\* Prices VAT included without shipping costs  
Prices and technical data subject to change without notice.

Available colors :  Grey / White



SELF DRAINING SYSTEM



Inflatable catamaran hull



Storage backpack

## TWIN FASTCAT

New conception of inflatable tender, style catamaran that offer excellent stability and unmatched speed with low power engine.

World premiere, the tender include a self draining system. The floor is constructed with the Drop Stitch technologie and can be inflated with 1 BAR of pressure for super high rigidity.

### STANDARD EQUIPMENT

- High pressured Drop Stitch floor
- Eva pads
- Aluminium bench
- Pump
- Repair kit
- Oars
- Backpack for storage and transport



Model	TWC330	TWC300	TWC280	TWC260	TWC230	TWC200
Overall length (cm)	330	300	280	260	230	200
Overall beam (cm)	172	166	166	158	153	148
Inside length (cm)	261	233	213	190	160	132
Inside beam (cm)	74	68	70	65	64	63
Total weight* (Kg)	40	38	36	34	28	25,3
Max. passengers	4	4	4	3,5	3	2
Max load (Kg)	566	510	484	450	350	250
Tube (cm)	48-30	48-29	48-29	45-29	42-29	42-29
Shaft	Court	Court	Court	Court	Court	Court
Max. power	15 HP	10 HP	8 HP	6 HP	6 HP	6 HP
Dimensions in bag (cm)	100x65x45	100x65x40	100x60x40	100x60x40	100x55x35	100x55x35
PVC	Price** 1 099 €	999 €	949 €	899 €	849 €	799 €

\* A variation of +/- 10% is possible on all announced weights - \*\* Prices VAT included without shipping costs  
Prices and technical data subject to change without notice.

Available colors :  Olive / White  Black / Light grey  Dark grey / Light grey  Orange / White  Pink / White  Grey / Light grey



## RESCUE BOAT

A boat with 100% self-draining system and extra reinforcements dedicated to professionals.

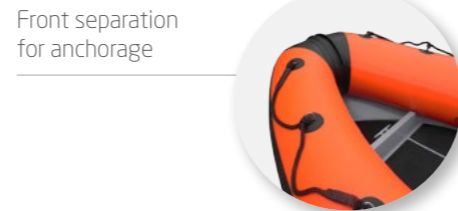
Boat specially design for an intensive usage, equipped with an ultra reinforced aluminium hull with 100% self-draining system. The position of the liferoles and all the reinforcements have been specially studied to guaranty the optimal longevity, the boat is therefore perfectly adapted to professionals' needs.

### STANDARD EQUIPMENT

- Reinforced aluminium hull
- Self-draining system
- Tissu PVC
- Places adapted for fuel tank and battery
- U-bolts of lifting and towing integrated to the hull
- Anti-skid EVA pads on deck
- Ultra wide band chafing
- Protection bow
- Reinforced transom
- Pump
- Oars
- Repair kit



Adapted space for fuel tank and battery



Front separation for anchorage

Available color : ■ Orange



Model	430	370
Overall length (cm)	430	370
Overall beam (cm)	187	156
Inside beam (cm)	89	68
Bow locker width (cm)	60	57
Stern height (cm)	103	89
Bow height (cm)	67	58
Total weight* (Kg)	126	75
Max. passengers)	8	6
Tube (cm)	50	45
Nb. of airtight chambers	4	3
Shaft	Long	Short
Max. power	60 HP	25 HP
Front trunk	Separation Separation	
PVC	Price** 5 549 €	4 199 €
Hypalon	Price** 7 549 €	6 299 €

\* A variation of +/- 10% is possible on all announced weights - \*\* Prices VAT included without shipping costs  
Prices and technical data subject to change without notice.

**3D TENDER**  
HIGH PERFORMANCE RESEARCH & DEVELOPMENT

## 3D TENDER ACCESSORIES



SEAT - REAR TRUNK L	REF: A01
Length (cm)	80
Width (cm)	50
Seat height (cm)	44
Total height (cm)	90
Price*	649 €

For PATROL 530, 550, XPRO 535, 490, 445, 420.



SEAT - REAR TRUNK XL	REF: A02
Length (cm)	92
Width (cm)	52
Seat height (cm)	58
Total height (cm)	90
Price*	859 €

For PATROL 650, 600 - XPRO 589.



SIÈGE JOCKEY	REF: A03
Length (cm)	53
Width (cm)	35
Seat height (cm)	57
Total height (cm)	96
Price*	599 €

For PATROL & XPRO RIB all sizes.



JOCKEY SEAT PILOT	REF: A04
Length (cm)	69
Width (cm)	33
Seat height (cm)	68
Total height (cm)	96
Price*	599 €

For PATROL & XPRO RIB all sizes.



JOCKEY SEAT WINGS	REF: A05
Length (cm)	69
Width (cm)	33
Seat height (cm)	57
Total height (cm)	96
Price*	829 €

For PATROL & XPRO RIB all sizes.



JOCKEY SEAT DOUBLE	REF: A06
Length (cm)	112
Width (cm)	33
Seat height (cm)	68
Total height (cm)	99
Price*	1099 €

For PATROL & XPRO RIB all sizes.



BOLSTER SEAT L	REF: A07
Length (cm)	80
Width (cm)	40
Seat height (cm)	82
Total height (cm)	98
Price*	699 €

Standard on PATROL 600, 550.



BOLSTER SEAT XL	REF: A08
Length (cm)	95
Width (cm)	35
Seat height (cm)	85
Total height (cm)	98
Price*	799 €

Standard on PATROL 650.



CONSOLE FRONT TRUNK L	REF: A09
Length (cm)	105
Width (cm)	70
Seat height (cm)	38
Total height (cm)	140
Price*	1149 €

Standard on PATROL 600, 550  
Option for XPRO 589.



CONSOLE CFRONT TRUNK XL	REF: A10
Length (cm)	90
Width (cm)	85
Seat height (cm)	45
Total height (cm)	140
Price*	1299 €

En standard sur PATROL 650



CONSOLE	REF: A11
Length (cm)	83
Width (cm)	62
Seat height (cm)	46
Total height (cm)	149
Price*	899 €

Standard on PATROL 530 & 560



CONSOLE	REF: A26
Length (cm)	45
Width (cm)	62
Total height (cm)	147
Price*	790 €

Prices and technical data subject to change without notice.  
\* Prices VAT included without shipping costs



JOCKEY CONSOLE	REF: A12
Length (cm)	135
Width (cm)	50
Seat height (cm)	55
Total height (cm)	90
Price*	999 €



CONSOLE JOCKEY CLUB	REF: A24
Length (cm)	125
Width (cm)	45
Seat height (cm)	83
Total height (cm)	95
Price*	990 €



SEAT CONSOLE ALUMINIUM	REF: A21
Length (cm)	114
Width (cm)	70
Seat height (cm)	45
Total height (cm)	78
Price*	890 €



LEANING POST	REF: A13
Length (cm)	42
Width (cm)	50
Total height (cm)	83
Price*	599 €

Standard on PATROL 530 & 560.



TIP TOP	REF: A14
Length (cm)	160
Width (cm)	130
Total height (cm)	190
Console max. width (cm)	114
Price*	1399 €

For PATROL & XPRO



**ROLL BAR SIMPLE**  
REF: A15  
For PATROL all sizes  
399 €\*



**ROLL BAR PATROL**  
REF: A16  
For PATROL all sizes  
699 €\*



**ROLL BAR XPRO**  
REF: A17  
For XPRO 589, 535, 490, 445  
699 €\*



**FISHING ROD HOLDER**  
REF: A18  
For roll bar & tip top  
69 €\*



**DOUBLE FISHING ROD HOLDER**  
REF: A19  
For roll bar & tip top  
99 €\*



**FISHING ROD HOLDER - 5 RODS**  
REF: A20  
For roll bar & tip top  
249 €\*



**DINGHY WHEELS**  
REF: A22  
99 €\*



**BOX TIPTOP**  
REF: A25  
For tip top  
299 €\*

# PACK BOAT + MOTOR

PRICE VAT INCLUDED without transportation costs



XPRO Heavy Duty	PACK 2,5 HP	PACK 6 HP	PACK 9.9 HP	PACK 15 HP	PACK 20 HP	PACK 25 HP	PACK 30 HP
XPRO Heavy Duty 320	2 302 €	2 902 €	4 439 €	4 964 €	5 282 €		
XPRO Heavy Duty 360	2 482 €	3 082 €	4 619 €	5 144 €	5 462 €		
XPRO Heavy Duty 380	2 572 €	3 172 €	4 709 €	5 234 €	5 552 €		
XPRO Heavy Duty 420	2 752 €	3 352 €	4 889 €	5 414 €	5 732 €		
XPRO Heavy Duty 460	3 022 €	3 622 €	5 159 €	5 684 €	6 002 €	6 547 €	
XPRO Heavy Duty 500	3 409 €	4 009 €	5 546 €	6 071 €	6 389 €	6 934 €	
XPRO Heavy Duty 550	3 652 €	4 252 €	5 789 €	6 314 €	6 632 €	7 177 €	7 945 €

XPRO RIB Aluminium	PACK 2,5 HP	PACK 6 HP	PACK 9.9 HP	PACK 15 HP	PACK 20 HP	PACK 25 HP	PACK 30 HP
XPRO RIB Alu 390 - PVC	3 382 €	3 982 €	5 519 €	6 044 €	6 362 €	6 907 €	
XPRO RIB Alu 390 - Hypalon	5 002 €	5 602 €	7 139 €	7 664 €	7 982 €	8 527 €	
XPRO RIB Alu 415 - PVC		4 162 €	5 699 €	6 224 €	6 542 €	7 087 €	
XPRO RIB Alu 415 - Hypalon		5 962 €	7 499 €	8 024 €	8 342 €	8 887 €	
XPRO RIB Alu renf. 420 - PVC		5 602 €	7 139 €	7 664 €	7 982 €	8 527 €	
XPRO RIB Alu renf. 420 - Hyp		7 762 €	9 299 €	9 824 €	10 142 €	10 687 €	

ULTRA LIGHT	PACK 2,5 HP	PACK 6 HP	PACK 9.9 HP	PACK 15 HP	PACK 20 HP	PACK 25 HP	PACK 30 HP
ULTRA LIGHT 250 - PVC	2 024 €	2 804 €					
ULTRA LIGHT 250 - Hypalon	2 654 €	3 254 €	4 791 €				
ULTRA LIGHT 270 - PVC	2 294 €	2 894 €	4 431 €				
ULTRA LIGHT 270 - Hypalon	2 924 €	3 524 €	5 061 €				
ULTRA LIGHT 290 - PVC	2 420 €	3 020 €	4 557 €	5 082 €			
ULTRA LIGHT 290 - Hypalon	3 104 €	3 704 €	5 241 €	5 766 €			
ULTRA LIGHT 310 - PVC	2 519 €	3 119 €	4 656 €	5 181 €			
ULTRA LIGHT 310 - Hypalon	3 248 €	3 848 €	5 385 €	5 910 €			
ULTRA LIGHT 330 - PVC	2 618 €	3 218 €	4 755 €	5 280 €	5 598 €		
ULTRA LIGHT 330 - Hypalon	3 374 €	3 974 €	5 511 €	6 036 €	6 354 €		
ULTRA LIGHT 360 - PVC	2 924 €	3 524 €	5 061 €	5 586 €	5 904 €		
ULTRA LIGHT 360 - Hypalon	3 734 €	4 334 €	5 871 €	6 396 €	6 714 €		

ULTIMATE RIB Aluminium	PACK 2,5 HP	PACK 6 HP	PACK 9.9 HP	PACK 15 HP	PACK 20 HP	PACK 25 HP	PACK 30 HP
ULTIMATE 240 - PVC	2 384 €	2 984 €					
ULTIMATE 240 - Hypalon	2 888 €	3 488 €					
ULTIMATE 260 - PVC	2 438 €	3 038 €	4 575 €				
ULTIMATE 260 - Hypalon	2 978 €	3 578 €	5 115 €				
ULTIMATE 280 - PVC	2 564 €	3 164 €	4 701 €	5 226 €			
ULTIMATE 280 - Hypalon	3 104 €	3 704 €	5 241 €	5 766 €			
ULTIMATE 300 - PVC	2 654 €	3 254 €	4 791 €	5 316 €			
ULTIMATE 300 - Hypalon	3 194 €	3 794 €	5 331 €	5 856 €			

ULTIMATE RIB Aluminium	PACK 2,5 HP	PACK 6 HP	PACK 9.9 HP	PACK 15 HP	PACK 20 HP	PACK 25 HP	PACK 30 HP
ULTIMATE 320 - PVC	2 708 €	3 308 €	4 845 €	5 370 €			
ULTIMATE 320 - Hypalon	3 284 €	3 884 €	5 421 €	5 946 €	6 264 €		
ULTIMATE 340 - PVC	2 924 €	3 524 €	5 061 €	5 586 €	5 904 €		
ULTIMATE 340 - Hypalon	3 644 €	4 244 €	5 781 €	6 306 €	6 624 €		
ULTIMATE 360 - PVC	3 104 €	3 704 €	5 241 €	5 766 €	6 084 €		
ULTIMATE 360 - Hypalon	4 274 €	4 874 €	6 411 €	6 936 €	7 254 €	7 799 €	
ULTIMATE 390 - PVC	3 554 €	4 154 €	5 691 €	6 216 €	6 534 €	7 079 €	
ULTIMATE 390 - Hypalon	4 904 €	5 504 €	7 041 €	7 566 €	7 884 €	8 429 €	
ULTIMATE 420 - PVC	4 184 €	4 784 €	6 321 €	6 846 €	7 164 €	7 709 €	
ULTIMATE 420 - Hypalon	5 534 €	6 134 €	7 671 €	8 196 €	8 514 €	9 059 €	

STEALTH RIB Aluminium	PACK 2,5 HP	PACK 6 HP	PACK 9.9 HP	PACK 15 HP	PACK 20 HP	PACK 25 HP	PACK 30 HP
STEALTH 360 - PVC	3 518 €	4 118 €	5 655 €	6 180 €	6 498 €	7 043 €	
STEALTH 360 - Hypalon	4 598 €	5 198 €	6 735 €	7 260 €	7 578 €	8 123 €	
STEALTH 390 - PVC	4 004 €	4 604 €	6 141 €	6 666 €	6 984 €	7 529 €	8 297 €
STEALTH 390 - Hypalon	5 318 €	5 918 €	7 455 €	7 980 €	8 298 €	8 843 €	9 611 €
STEALTH 420 - PVC	4 994 €	5 594 €	7 131 €	7 656 €	7 974 €	8 519 €	9 287 €
STEALTH 420 - Hypalon	6 614 €	7 214 €	8 751 €	9 276 €	9 594 €	10 139 €	10 907 €
STEALTH 460 - PVC	5 408 €	6 008 €	7 545 €	8 070 €	8 388 €	8 933 €	9 701 €
STEALTH 460 - Hypalon	7 028 €	7 628 €	9 165 €	9 690 €	10 008 €	10 553 €	11 321 €

SURFACE RIB Aluminium	PACK 2,5 HP	PACK 6 HP	PACK 9.9 HP	PACK 15 HP	PACK 20 HP	PACK 25 HP	PACK 30 HP
SURFACE 330 - PVC	3284€	3884€	5421€	5946€	6264€	6809€	
SURFACE 330 - Hypalon	3914€	4514€	6051€	6576€	6894€	7439€	

LUX	PACK 2,5 HP	PACK 6 HP	PACK 9.9 HP	PACK 15 HP	PACK 20 HP	PACK 25 HP	PACK 30 HP
LUX 280	2 212 €	2 812 €					
LUX 300	2 392 €	2 992 €					
LUX 325	2 662 €	3 262 €	4 799 €	5 324 €			

TWIN AIR	PACK 2,5 HP	PACK 6 HP	PACK 9.9 HP	PACK 15 HP	PACK 20 HP	PACK 25 HP	PACK 30 HP
TWIN AIR 160	1 357 €						
TWIN AIR 180	1 402 €						
TWIN AIR 200	1 447 €						
TWIN AIR 230	1 492 €						
TWIN AIR 250	1 582 €	2 182 €					
TWIN AIR 270	1 672 €	2 272 €					
TWIN AIR 290	1 717 €	2 317 €					

TWIN ROUND AIR	PACK 2,5 HP	PACK 6 HP	PACK 9.9 HP	PACK 15 HP	PACK 20 HP	PACK 25 HP	PACK 30 HP
TWIN ROUND AIR 160	1 321 €						
TWIN ROUND AIR 180	1 375 €						

TWIN ROUND AIR	PACK 2,5 HP	PACK 6 HP	PACK 9.9 HP	PACK 15 HP	PACK 20 HP	PACK 25 HP	PACK 30 HP
TWIN ROUND AIR 200	1 420 €						
TWIN ROUND AIR 235	1 447 €						
TWIN ROUND AIR 250	1 537 €						

TWIN VIB AIR	PACK 2,5 HP	PACK 6 HP	PACK 9.9 HP	PACK 15 HP	PACK 20 HP	PACK 25 HP	PACK 30 HP
TWIN VIB AIR 210	1 582 €	2 182 €					
TWIN VIB AIR 250	1 672 €	2 272 €					
TWIN VIB AIR 280	1 762 €	2 362 €	3 899 €				
TWIN VIB AIR 300	1 852 €	2 452 €	3 989 €				
TWIN VIB AIR 330	2 122 €	2 722 €	4 259 €	4 784 €			

WORLD TRAVEL	PACK 2,5 HP	PACK 6 HP	PACK 9.9 HP	PACK 15 HP	PACK 20 HP	PACK 25 HP	PACK 30 HP
WORLD TRAVEL 200	1 204 €						
WORLD TRAVEL 235	1 222 €						

TWIN V-Shape	PACK 2,5 HP	PACK 6 HP	PACK 9.9 HP	PACK 15 HP	PACK 20 HP	PACK 25 HP	PACK 30 HP
TWIN V-Shape 160	1 402 €						
TWIN V-Shape 180	1 447 €						
TWIN V-Shape 200	1 492 €						
TWIN V-Shape 230	1 537 €						
TWIN V-Shape 250	1 627 €	2 227 €					
TWIN V-Shape 270	1 717 €	2 317 €					
TWIN V-Shape 290	1 762 €	2 362 €	3 899 €				

TWIN EVA	PACK 2,5 HP	PACK 6 HP	PACK 9.9 HP	PACK 15 HP	PACK 20 HP	PACK 25 HP	PACK 30 HP
TWIN EVA 160	1 447 €						
TWIN EVA 180	1 484 €						
TWIN EVA 200	1 537 €						
TWIN EVA 230	1 574 €						
TWIN EVA 250	1 664 €						
TWIN EVA 270	1 754 €	2 354 €					
TWIN EVA 290	1 807 €	2 407 €					

TWIN Hypalon	PACK 2,5 HP	PACK 6 HP	PACK 9.9 HP	PACK 15 HP	PACK 20 HP	PACK 25 HP	PACK 30 HP
TWIN Hypalon 230	2 446 €	3 046 €					
TWIN Hypalon 250	2 564 €	3 164 €					
TWIN Hypalon 270	2 654 €	3 254 €					
TWIN Hypalon 290	2 744 €	3 344 €	4 881 €				

TWIN FAST CAT	PACK 2,5 HP	PACK 6 HP	PACK 9.9 HP	PACK 15 HP	PACK 20 HP	PACK 25 HP	PACK 30 HP
TWIN FASTCAT 200	1 582 €	2 182 €					
TWIN FASTCAT 230	1 627 €	2 227 €					
TWIN FASTCAT 260	1 672 €	2 272 €					
TWIN FASTCAT 280	1 717 €	2 317 €					
TWIN FASTCAT 300	1 762 €	2 362 €	3 899 €				
TWIN FASTCAT 330	1 852 €	2 452 €	3 989 €	4 514 €			



For more informations :

**WWW.3DTENDER.COM**

Or contact our advisor : Mr Olivier DALIDEC  
(+33) 06 81 31 19 36 - international@3dtender.com

**3D TENDER®**  
HIGH PERFORMANCE RESEARCH & DEVELOPMENT

3D MARINE - 520 route de Penetty - 29850 GOUESNOU - France