



3D TENDER[®]
HIGH PERFORMANCE RESEARCH & DEVELOPMENT

3D TENDER QUALITY



3D TENDER®

HIGH PERFORMANCE RESEARCH & DEVELOPMENT

Semi-rigids, polyester hulls, aluminum hulls, removable floors, ultra-light weight dinghies with high pressure inflatable floors makes more than **100,000 boats delivered worldwide** since the creation of the 3D TENDER brand in 2007. Performance, comfort, durability and unbeatable price have always been core values of the 3D TENDER brand.

3D TENDER's robust approach to design and construction gives recreational and commercial boat owners the confidence to go safely and comfortably the extra mile and face the conditions that many others would avoid. The 3D TENDER line offers you an unmatched choice of models at the best value on the market!

ENVIRONMENT

In the production of 3D Tender boats we pay great attention to environmental respect. We make sure to use non-polluting, energy-saving production processes that respects the health of employees and users. The choice of raw materials is crucial since it allows us to build boats that are very resistant but also close to nature.

FEATHER WEIGHT 3D TENDER

Aluminum hulls give boats their strength while giving them an unbeatable advantage in terms of weight. These boats can therefore be propelled by smaller and more fuel-efficient engines, reducing their CO₂ emissions.

ALUMINIUM 3D TENDER

Aluminum is one of the only materials that can be recycled without losing its unlimited qualities and properties .

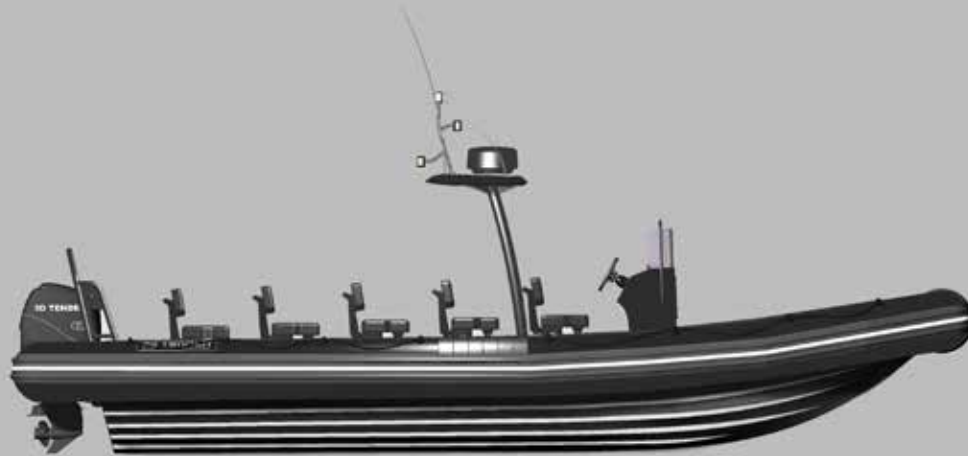
POWDER COATING

3D Tender chose to use powder paint. The powder is electrically charged and sprayed onto the prepared surfaces before placing it in the oven. The finish is impeccable, the painted surface is smooth and shiny.

The powder paint bring considerable advantages compared to conventional liquid paint:

- No volatile organic mixture
- No solvent (no risk of catching the fire , less pollution, etc ...)
- No pollution, the powder excess is easily collected by teh vacuum

Time and curing temperature were significantly improved in order to reduce energy consumption of the process.



PATROL 11 & 10 & 860 & 760 & 670

The Patrol range is considered as the elite of the semi-rigid in 3D Tender range.

Three model sizes of 860, 760 and 670 were developed in addition to answer to the specific need of the professionals with entire modular equipment

Thanks to the study of specific environmental constraints and research of the higher performance the Patrol was developed for professionals in need for a boat for any condition.

Outsized reliability, with unmatched performance and capacity without limit.

The Patrol 860 is available in commercial NUC 12 passenger transportation.

STANDARD EQUIPMENT

- Double front box
- Fuel tank
- Double Heavy duty rubbing strake
- Length keel guard
- Carry handles
- Retractable Cleat
- Pump



Triple bench (A41) 1 754€



Cabin (A38) 6 225 €



Seat SA (A39) 1 635 €



3D TENDER is an official partner of the force of the Royale Navy of Morocco.



Model	PATROL 11	PATROL 10	PATROL 860	PATROL 760	PATROL 670
Overall length (cm)	1100	1000	860	760	670
Overall width (cm)	295	295	292	292	268
Total weight* (Kg)	1600	1350	1050	900	700
Max. passengers	16 (B) 24 (C)	15 (B) - 20 (C)	20 (C) - 14 (B)	17(C) - 12 (B)	15 (B) - 10 (C)
Tube (cm)	52	52	55	55	52
Number of airtight chambers	7	7	6	6	6
Shaft	Simple XXL Double XL	Simple XXL Double XL	Simple XXL Double XL	Simple XXL Double XL	Simple XL Double L
Max. power (Ch/Kw)	700 HP	600 HP	500 HP	300 HP	200 HP
Fuel tank	800 L	800 L	300L	300L	150 L
Console & Pilot seat	Option	Option	Option	Option	Option
PVC	Price** 40 015 €	36 925 €	28 875 €	23 325€	16 425 €
Hypalon	Price** 46 195 €	43 105 €	34 635 €	28 875 €	21 675 €

* In tropical climate areas the use of 3D TENDER PVC boats are excluded from warranty.
 * A variation of +/- 10% is possible on all announced weights - ** Prices VAT included without shipping cost

Prices and technical data subject to change without notice.

PATROL *Limited Edition*

The Patrol Limited edition is considered as the elite of semi-rigids in our range. It comes in 5 sizes all made of PVC thermo-welded or hypalon tissue.

Thanks to the study of specific environmental constraints and research of the higher performance the Patrol was developed for professionals in need for a boat for any condition.

Outsized reliability, with unmatched performance and capacity without limit.

The Patrol 550 is available in division 222.



3D TENDER est partenaire officiel des forces de la Navy Royales du Maroc.

STANDARD EQUIPMENT

- PVC glued fabric
- Self-bailing deck (Patrol 600)
- Anchor well
- Front box
- Eva anti-slip pad on the entire deck
- Double Heavy duty rubbing strake
- Length keel guard
- Console & driver seat
- Carry handles
- Retractable Cleat
- Pump

PATROL 600 & 650:

Console XL + Seat bolster XL



Picknick table

PATROL 650 HYPALON - Option - Triple rear bench 1 190 euros

NOUVEAUTÉ



PATROL 550:

Console L + Seat bolster L



Model	PATROL 650	PATROL 600	PATROL 560	PATROL 550	PATROL 530
Overall length (cm)	650	600	560	550	530
Overall beam (cm)	250	240	213	240	213
Inside length (cm)	530	475	430	430	403
Inside beam (cm)	150	142	120	123	120
Total weight* (Kg)	450	350	280	290	230
Max. passengers	15	13	10	11	9
Tube (cm)	57	57	49	57	49
Number of airtight chambers	6	5	5	6	5
Shaft	Long	Long	Long	Long	Long
Max. power (Ch/Kw)	140 HP	140 HP	100 HP	115 HP	90 HP
Incorporated fuel tank	100L	100L	60L	100L	60L
Console & Pilot seat	Standard	Standard	Standard	Standard	Standard
PVC	Price** 14 250 €	13 275 €	9 900 €	11 535 €	9 435 €
Hypalon	Price** 17 385 €	16 335 €	11 985 €	14 085 €	11 925 €
Option boat bath scale	Price In standard	In standard		In standard	

PATROL 550 HYÁLON - Option -
Triple rear bench 1 190 euros



Picnicking table

* In tropical climate areas the use of 3D TENDER PVC boats are excluded from warranty.
* A variation of +/- 10% is possible on all announced weights - ** Prices VAT included without shipping cost

Prices and technical data subject to change without notice.



DREAM 540

Package BOAT + ENGINE

The Dream 540 is equipped with standard hydraulic steering, engine shut-off cord, battery, trim indicator, multi-function lcd screen and the Hidea 60 hp 4-stroke injection engine.

For your comfort the pilot seat is equipped with a storage box and folding picnic table.

The console of the boat is tilting in order to facilitate the storage of the boat in the garage.

24 liters fuel tank with a decanter filter is installed in the front compartment of the console. The Dream 540 is also equipped with a large bow locker to store the mooring, and an optional two-seater bench seat for more seating on the boat.

The Dream 540 is equipped and ready to navigate!

EQUIPEMENT STANDARD

- Thermo-welded PVC fabric
- Hidea 60 hp - 4-stroke injection engine
- Hydraulic steering
- Anchorage
- Picnic table
- Tilting console
- Front trunk
- 24 L fuel tank in console
- Rubbing strake
- Double heavy duty rubbing strake
- Pilot seat



New this year

PACKAGE PRICE
BOAT + ENGINE
13 990 €

Collaboration





Tilting console



Fuel tank integrated into console



Picnick table



Rear bench seat Dream 540 2 places
Price: 890 euros

Available colors

PVC : Light grey Dark grey

MODEL	DREAM 540	
Length	525	
Width	213	
Tube (cm)	54	
Max. passengers (ISO)	10	
Max. autorised charge	1350	
Total weight (kg)	750	
Number of airtight chambers	6	
Shaft	Long	
Max. power (Ch/Kw)	75 HP	
Integrated fuel tank	24 L	
PVC boat without engine	Public price**	9 990 €
PVC* with engine EF60	Public price**	13 990 €

* In tropical climate areas the use of 3D TENDER PVC boats are excluded from warranty.

** A variation of +/- 10% is possible on all announced weights - ** Prices VAT included without shipping cost

Prices and technical data subject to change without notice. 9



Hidea 60 HP - 4 stroke injection engine

Details

Max. outputy (kw)	44.1 KW
Recommended Max RPM	5000 -5800
Strok	4
Cylinder	4
Displacement (cc)	996
Bore × Stroke	65x75
Weight	L: 109kg
Gear ratio	F-N-R
Gear Shift position	ECM
Cooling system	Water-cooling
Starting system	Electric start
Control System	Tiller & Remote Control
Standard Capacity of Fuel Tank (L)	24

This year 3D MARINE has chosen to collaborate with the HIDEA brand, the largest outboard engine manufacturer in China, with an annual production capacity of 100,000 outboard engines. The 3D marine design office specialized in the design of semi-rigid boats and the HIDEA shipyard has developed and chosen to motorize the new 3D Tender Dream 540 with the new HIDEA 60 HP 4-stroke injection engine.

Electronic Fuel Injection (EFI) system.

A 4-cylinder engine equipped with programmed electronic fuel injection (EFI) adopts the DELPHI system, which precisely controls the ignition timing at start-up, ensuring optimum overall performance, with instant throttle response and fuel consumption performance.

Quick start

Electronic Fuel Injection (EFI) automatically adjusts the air-fuel mixture for quick and easy starting and warm-up. Simply turn the key and start the engine.

Silent.

Thanks to the reverse exhaust system, which redirects exhaust gases through the propeller into the water, the engine is quieter during operation.

Engine Alert System

An engine alert system, it constantly monitors vital engine functions and reduces the likelihood of damage by alerting the driver to overheating, low oil pressure and other critical engine functions.

Power thrust design.

The HDEF60 EFI uses a higher gear ratio to provide these engines with extraordinary forward and reverse thrust, improving handling and performance.

Cruising fuel economy.

Multi-point fuel injection works in concert with long intake manifolds, automatically adjusting the air-fuel mixture according to speed and load, maximizing power across the entire rpm range and saving up to 20 percent fuel at cruising speeds.



9 REASONS TO CHOOSE A HIDEA ENGINE:

1. Hidea is the largest outboard engine manufacturer in China, with an annual production capacity of 100,000 outboard engines.
2. Hidea outboard engines offer high corrosion resistance due to the world's most advanced anti-corrosion technology and our automatic electrophoresis production line.
3. Each outboard motor is provided with 6 coats of American PPG paint, which enables our outboard motors to stay beautiful and have excellent anti-corrosion performance.
4. Our engines are robotically cleaned with clear water and oil channels, which has greatly extends the service life of our engines.
5. Our main components are produced with special high-precision tooling in our machining center to ensure high quality and stability..
6. The engine and gearbox are tested to be airtight on the line to ensure that both are sealed.
7. The motor joints are glued by servo-controlled automatic applicators that make the glue lines uniform and accurate.
8. Automatic clamping machines assemble all of our basic components with precise tools and torque.
9. Hidea performs axial play tests on the line to ensure that each machine has no mechanical loss of power and that moving parts are perfectly matched.





DREAM 6

Dream 6 model is a brand new model in 3D Tender range.

New hull with the deep V provides better sailing quality and comfort. Boat has plenty of onboard storage, modern and optimized seats and new adventurous look.

The front deck transforms into sun-bathing area for relaxing moments in the sun and also turns into standard picnic table.

Tilting console with enveloping windscreen will make your boating time much more comfortable.

The rear platform facilitates the decent and boarding on to the boat and increases the moving space at the rear of the boat.

Dream 6 offers many storage solutions:

- Under the bolster
- In the baggage compartment (access from the central console)
- Back and front trunks of the boat Dream 6

STANDARD EQUIPMENT

- Thermo-welded PVC fabric
- Self-bailing deck
- Front sun bathing area
- Picnic table
- Front box
- Fuel tank 80 L
- Tilting console with enveloping windscreen
- Rubbing strake
- Length keel guard
- Black gelcoat with Eva black /white flooring
- Anchorage
- 3 place back seat
- Modular pilot seat sitting / standing
- Shower kit and bathing ladder



Picnic table



Tilting console



Sun bathing area



40 liters shower kit and bathing ladder included



Roll-bar with bimini
Price: 1 635 euros



Available colors:

PVC : Light grey
 White

Hypalon : White

MODEL	DREAM 6	
Length	590	
Width	245	
Tube (cm)	52/57	
Max. passengers	10	
Max. authorised charge	1250	
Total weight (kg)	500	
Number of airtight chambers	5	
Shaft	Long	
Max. power (Ch/Kw)	120 HP	
Built-in fuel tank	80L	
PVC	Prix TTC**	17 775 €
Hypalon	Prix TTC**	19 785 €

* In tropical climate areas the use of 3D TENDER PVC boats are excluded from warranty.

** A variation of +/- 10% is possible on all announced weights - ** Prices VAT included without shipping cost

Prices and technical data subject to change without notice.



LUX 655



Sunbathing area

Locker(s) under sunbath



Removable picnic table

Rear bench
Models 655 & 635



LUX

Our range of semi-rigid LUX as been created to offer a maximum comfort on the boat. It is a sporty, elegant and perfectly adapted for the families boat. Everything has been carefully calculated, from the deep V-hull that offers comfort and maneuverability, to the standard equipment on-board.

Every LUX model range is equipped with a large sunbathing area and a removable picnic table. The models 440 to 550 are equipped with a rear modular seat with a standing up or sitting down positions offering a perfect combination between confort and space saving. The models 635 and 655 comes with a large rear bench.

LUX Limited Black edition 655

Black gel coat, black hypalon tube, black eva pad, 40L shower kit, side ladders.

STANDARD EQUIPMENT

- Thermo-welded PVC fabric
- Self-bailing deck
- Sunbathing area
- Bow roller
- Console
- Fuel tank
- Picnic table
- Bow locker
- Steering system Teleflex (up to 550)
- Eva anti-slip pad on the entire deck
- Double heavy duty rubbing strake
- Bow protection
- Carrying handles
- 40 L Shower kit



LUX 500



LUX 440



Model	LUX 655	LUX 635	LUX 550	LUX 500	LUX 440	
Overall length (cm)	655	635	550	500	440	
Overall beam (cm)	270	255	224	222	193	
Total weight* (Kg)	900	550	350	300	280	
Max. passengers	12	10	9	8	7	
Tube (cm)	45 / 58	54 / 58	46 / 52	46 / 52	46 / 52	
Number of airtight chambers	6	5	5	5	3	
Shaft	XL	Long	Long	Long	Long	
Max. power (Ch/Kw)	200 HP	140 HP	90 HP	80 HP	60 HP	
Built in fuel tank capacity	100 L	100 L	50 L	50 L	40 L	
Console & Seat	Standard	Standard	Standard	Standard	Standard	
PVC	Price**	18 435 €	14 925 €	12 375 €	11 325 €	9 285 €
Hypalon	Price**	21 525 €	17 535 €	14 415 €	13 425 €	11 325 €
LUX Limited Black edition	.	23 999 €	-	-	-	-
Option roll bar + bimini	.	3 075 €	-	-	-	-

Available colors :

PVC :  Dark grey / White

Hypalon :  Dark grey / White

* In tropical climate areas the use of 3D TENDER PVC boats are excluded from warranty.

* A variation of +/- 10% is possible on all announced weights - ** Prices VAT included without shipping cost

Prices and technical data subject to change without notice.



XPRO

The XPRO range includes 4 models all made of thermo-welded PVC or glued hot fabric. It is also available in hypalon tissue.

Our XPRO range is completely modular. You will be able to upgrade your boat according to your wishes and needs (driver seat, console and accessories are placed where you want). Main characteristics of XPRO: fast, stable and easy to handle, comfortable to drive.

The range is ideal for fishing and family time, the best quality / price ratio!

STANDARD EQUIPMENT


- Fabric PVC glued or welded seams
- Bow roller
- Front box
- Eva anti-slip pad on the entire deck
- Double Heavy duty rubbing strake
- Length keel guard
- Protection cover for storage
- Console & driver seat
- Double lifelines
- Pump, Repair kit, paddles



ROLL BAR XPRO SEAT
for XPRO 535, 490, 445
1 020 €



Available colors:

PVC :  Dark grey  Black

Hypalon :  Medium grey

CONSOLE AND STANDARD SEAT

XPRO 589 & 535:

Console
+
Seat bolster



XPRO 490 & 445:

Console
+
Seat



OPTION XPRO in replacement of the standard equipment

XPRO 589:

Console L + Seat bolster L
+ 1 790 €



XPRO 490 & 445:

Console + Seat bolster
+ 615 €



Model	XPRO 589	XPRO 535	XPRO 490	XPRO 445
Overall length (cm)	589	535	490	445
Overall beam (cm)	252	212	208	208
Inside length (cm)	472	368	335	303
Inside beam (cm)	133	101	101	101
Bow locker width (cm)	84	80	-	-
Stern height (cm)	127	119	114	112
Bow height (cm)	83	73	72	72
Total weight* (Kg)	400	234	178	167
Max. passengers	16	10	7	7
Max load (Kg)	1800	1350	880	800
Tube (cm)	57	52	52	52
Number of airtight chambers	6	6	6	6
Shaft	Long	Long	Long	Long
Max. power (Ch/Kw)	120 HP	75 HP	60 HP	50 HP
Front locker	Standard	Standard	Standard	Standard
Fuel tank	Option 58 L	Option 58 L	Option 58 L	Option 58 L
Console & seat	Standard	Standard	Standard	Standard
PVC	Price** 9 825 €	6 735 €	5 685 €	5 175 €
Hyalon	Price** 12 375 €	8 775 €	7 725 €	7 215 €

* In tropical climate areas the use of 3D TENDER PVC boats are excluded from warranty.

** A variation of +/- 10% is possible on all announced weights - ** Prices VAT included without shipping cost

Prices and technical data subject to change without notice.



STEALTH RIB Aluminium

Semi-rigid in reinforced aluminium !

With its new elegant but sporty design, the Stealth range is perfect for those who is in search of a craft constructed in reinforced aluminium. Stealth range boats developps great cruising speed with low power engine.

Each model is equipped with a double aluminium floor and it comes in a flat deck covered with an anti-slip EVA pad for a maximum of confort. Each Stealth model comes with a double front storage box to stock anchorage and fuel tank.

STANDARD EQUIPMENT

- Fabric PVC welded seams
- Aluminium hull
- Marine paint on aluminum powder
- Double front box
- Lifting and towing U-bolts integrated in the hull
- Eva anti-slip pad covering entire deck
- Ultra wide band chafing
- Inflation valves
- Pump
- Repair kit
- Oars
- Built-in fuel tank

OPTIONS



Console + Leaning Post : + 1 335€
For all models from 390 to 550

Additional option:
Tilting Console
Price: 413 €


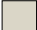


Roll Bar Seat / A29 : + 1 020€
Roll Bar Stealth / A31 : + 720€
For all the models



Tube protection cover

Sunbrella Marine fabric tube cover is worldwide known for its US resistance and strenght of the product.

Color :  Medium grey (grey hull)  Beige (white hull)



Model	ST 550	ST 500	ST 460	ST 420	ST 390	ST 360
Overall length (cm)	550	500	460	420	390	360
Overall beam (cm)	220	220	201	201	190	190
Inside length (cm)	426	379	362,5	318	299	259
Inside beam (cm)	118	118	105	105	94	94
Hull angle (degree)	24	24	20	20	22	22
Aluminium Thickness (cm)	0,4	0,4	0,4	0,4	0,4	0,3
Total weight* (Kg)	240	220	171	137	91	-
Fuel tank L (option)*	70	70	70	70	35	35
Maximum number of passengers	12	11	9	8	7	6
Maximum load (Kg)	1350	1000	900	800	700	600
Tube (cm)	51	51	48	48	48	48
Shaft	Long	Long	Long	Long	Long	Long
Maximum power (Ch/Kw)	90 HP	70 HP	60 HP	50 HP	50 HP	25 HP
Front trunk	Double	Double	Double	Double	Double	Double
Package dimensions (LxWxH cm)	500x145x112	425x145x112	405x135x106	380x135x106	360x115x80	324x115x80
PVC Price**	6 285 €	5 835 €	5 505 €	5 040 €	3 900 €	3 345 €
Hypalon Price**	8 940 €	7 980 €	7 350 €	6 885 €	5 400 €	4 590 €
Standard fuel tank	70 L	65 L	65 L	65 L	32 L	32 L
Tube protection cover (Option)	750 €	690 €	645 €	600 €	570 €	540 €

Double front box and fuel tank included with all Stealth models

Available colors:

PVC :  Kaki / White  Medium grey

Hypalon :  Medium grey

* In tropical climate areas the use of 3D TENDER PVC boats are excluded from warranty.

** A variation of +/- 10% is possible on all announced weights - ** Prices VAT included without shipping cost

Prices and technical data subject to change without notice.



XPRO RIB Aluminium

The XPRO RIB range comes in 3 sizes: 420, 415 and 390. All of them are made of PVC thermo-welded or glued-hot material. It is also available in Hypalon fabric.

Combining a sporty and elegant look, the XPRO RIB is ideal for those who is looking for a comfortable and lightweight boat. Each model is equipped with a rugged aluminum hull with a double floor and a front locker for storing the fuel tank.

XPRO RIB aluminium boats can achieve a good cruising speed with small engines which will also offer an important and significant fuel economy.

STANDARD EQUIPMENT

- Fabric PVC glued or welded seams
- Anti corrosion treated aluminum hull
- Marine powder paint on aluminum
- Anchor well
- Lifting and towing U-bolts integrated in the hull
- Slip coating UV resistant marine
- Ultra wide band chafing
- Protection bow
- Double References
- Aluminum bench slide
- Pump, oars, repair kit



Front trunk
with each standard
model

OPTION

Jockey console
1 020 € VAT inc.



Dinghy wheels
104 € VAT inc.



3D TENDER®

HIGH PERFORMANCE RESEARCH & DEVELOPMENT



Model	XPRO 420	XPRO 415	XPRO 390	
Overall length (cm)	420	415	390	
Overall beam (cm)	187	187	186	
Inside length (cm)	293	289	272	
Inside beam (cm)	89	89	86	
Bow locker width (cm)	67	67	67	
Stern height (cm)	103	103	103	
Bow height (cm)	67	63	58	
Total weight* (Kg)	128	89	69	
Max. passengers	8	8	7	
Max load (Kg)	900	860	700	
Aluminium Thickness (mm)	4 / 5	2,5 / 3	2,5 / 3	
Tube (cm)	50	50	45	
Number of airtight chambers	4	3	3	
Shaft	Long	Long	Long	
Max. power	60 HP	25 HP	25 HP	
Front locker	Standard	Standard	Standard	
Console & seat	Option	Option 1	Option 1	
PVC	Price**	4 740 €	3 090 €	2895 €
Hypalon	Price**	7 215 €	5 145 €	4 740 €

Available colors :

Hypalon :  Neptune grey

PVC :  Dark grey

 Black

* In tropical climate areas the use of 3D TENDER PVC boats are excluded from warranty.
 ** A variation of +/- 10% is possible on all announced weights - ** Prices VAT included without shipping cost

Prices and technical data subject to change without notice.



SLIDING 300 & 360 **Removable tube**

A worldwide innovation! Recyclable aluminium boat with a removable and exchangeable tube of the boat. It takes only a few minutes to remove the tube from the hull by simply pulling it.

The main concept of the semi-rigid Sliding 3D Tender boat is keeping the boat as long as you can and whenever your boat tube gets worn down or gets damaged and is not repairable you will be able to replace it with a new one. In this case you will be able to keep the hull and the engine. Removing and replacing the Sliding 300 tube is very simple and you will be able to do so by yourself. No need any professional help.

STANDARD EQUIPMENT

- Glued PVC fabric
- Anti corrosion treated aluminum hull
- Marine powder paint on aluminum
- Front storage box
- Lifting and towing U-bolts integrated in the hull
- Ultra wide chafing band
- Protection bow
- Aluminum sliding bench
- Pump, oars, repair kit

OPTION / REF: A40

Liftable wheels to bring your boat to the water 188€



Max charge 100 KG





Aluminium hull

Removable and echangeable tube



The price of the new replacement tube for Sliding 300 rib at 510 euros
360 rib at 570 euros.

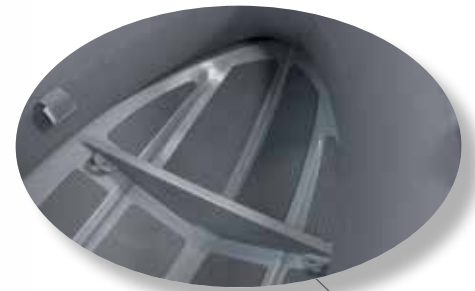
Available colors  Medium grey

Model	SLIDING 300	SLIDING 360
Overall length (cm)	300	360
Overall beam (cm)	180	180
Tube diameter	43	43
Max. passengers	5	6
Max. charge (Kg)	450	600
Total weight (Kg)	63	98
Number of airtight chambers	4	4
Shaft	Short	Short
Max. power (Ch/Kw)	15HP	25HP
Package dimensions (LxWxH cm)	260x120x70	320x120x80
PVC	2 985 €	3 180 €

* In tropical climate areas the use of 3D TENDER PVC boats are excluded from warranty.

** A variation of +/- 10% is possible on all announced weights - ** Prices VAT included without shipping cost

Prices and technical data subject to change without notice.



Separation on models 250 to 310

ULTRALIGHT RIB Aluminium

Our aluminium semi-rigids are known for its light weight!

The Ultra Light RIB range is available in six models made of thermo-welded PVC or glued hot PVC or available in Hypalon fabric.

Very light, with a very pronounced V shape that provides stability and exceptional passing through the waves and navigation without water sprays. This specially designed hull supports shock and abrasion that can be caused by rocks, corals and sandy beach. Models 330 and 360 are equipped with a double front trunk to store your fuel tank.

Incredibly ruebust and lightweight!

EQUIPEMENT STANDARD

- Fabric PVC welded seams
- Anti corrosion treated aluminum hull
- Marine powder paint on aluminum
- Front storage box on each models
- Double front box on models 330 and 360
- U-bolts of lifting and towing integrated in the hull
- Eva pads anti-slip on the entire deck
- Ultra wide band chafing
- Protection bow
- Aluminum bench
- Pump
- Oars

OPTION / REF: A40

Liftable wheels to bring your boat to the water 188€



Charge max 100 KG

3D TENDER[®]
HIGH PERFORMANCE RESEARCH & DEVELOPMENT

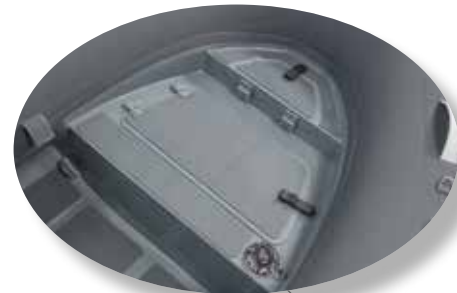


Model	UL 360	UL 330	UL 310	UL 290	UL 270	UL 250
Overall length (cm)	360	330	310	290	270	250
Overall beam (cm)	154	154	154	154	154	154
Inside length (cm)	266	246	227	209	189	170
Inside beam (cm)	76	76	76	76	76	76
Hull angle (degree)	14	14	14	14	14	14
Aluminium Thickness (cm)	0,25	0,25	0,25	0,25	0,25	0,25
Total weight* (Kg)	49	41	34	31	28	25
Category	C	C	D	D	D	D
Maximum number of passengers	6	6	5	4	4	3
Maximum load (Kg)	600	550	500	450	450	350
Tube (cm)	39	39	39	39	39	39
Shaft	Short	Short	Short	Short	Short	Short
Maximum power	25 HP	20 HP	15 HP	10 HP	10 HP	8 HP
Front trunk	Double	Double	Separation	Separation	Separation	Se paration
Package dimensions (LxWxH cm)	300x110x70	280x110x70	260x110x70	245x110x70	228x110x70	211x110x70
PVC	Price** 2 704 €	2 318 €	2 163 €	2 047 €	1 900 €	1 792 €
Hypalon	Price** 3 646 €	3 229 €	3 028 €	2 858 €	2 642 €	2 318 €
Tube protection cover	Price** 518 €	488 €	458 €	428 €	405 €	375 €

Cover **sunbrella**

Removable tube protection cover

Cover colors: Grey (grey hull) or beige (white hull)



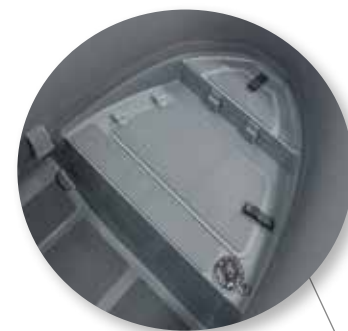
Double front box
on models 330 and 360

Available colors: PVC :  Olive / White  Medium grey Hypalon :  Medium grey

* In tropical climate areas the use of 3D TENDER PVC boats are excluded from warranty.

** A variation of +/- 10% is possible on all announced weights - ** Prices VAT included without shipping cost

Prices and technical data subject to change without notice.



Front trunk for all models

ULTIMATE RIB Aluminium

Semi-rigid tender in Aluminium, light and robust !

Each model is equipped with a double aluminium floor. For your comfort each boat is covered with an anti-slip EVA pad. Ultimate RIB aluminium models has integrated front storage box : single box for the models from 240 to 280 and double storage box for the models starting from 300 up to 420.

Each model over 280 has an equipment option console / pilot seat.

STANDARD EQUIPMENT

- Fabric PVC welded seams
- Anti corrosion treated aluminum hull
- Double aluminium floor
- Marine powder paint on aluminum
- Front storage box for each model
- Double front storage box for models over 300 cm
- Built-in fuel tank
- Lifting and towing U-bolts integrated in the hull
- Eva anti-slip pad on the entire deck
- Ultra wide band chafing
- Protection bow
- Aluminum bench
- Pump, Oars

OPTIONS

Console / Pilot Seal
Aluminium: 915€
For all models above 280



Pack Console TENDER
Ultimate: 1 530€





Tube cover 

Removable tube protection cover

Cover colors: Grey (grey hull) or beige (white hull)



Model	UT 420	UT 390	UT 360	UT 340	UT 320	UT 300	UT 280	UT 260	UT 240	
Overall length (cm)	420	390	360	340	320	300	280	260	240	
Overall beam (cm)	201	170	170	154	154	154	154	154	154	
Inside length (cm)	318	299,5	267	251	233	216	198	180	161	
Inside beam (cm)	105	80	80	76	76	76	76	76	76	
Aluminium Thickness (cm)	0,3	0,25	0,25	0,25	0,25	0,25	0,25	0,25	0,25	
Total weight* (Kg)	122	69	67	50	46	43	40	37	34	
Maximum number of passengers	8	7	6	6	5	5	4	4	3	
Maximum load (Kg)	850	700	650	550	500	450	400	350	300	
Tube (cm)	48	45	45	39	39	39	39	39	39	
Shaft	Long	Short	Short	Short	Short	Short	Short	Short	Short	
Maximum power	25 HP	25 HP	25 HP	20 HP	20 HP	15 HP	15 HP	10 HP	8 HP	
Front trunk	Double	Double	Double	Double	Double	Double	Simple	Simple	Simple	
Package dimensions (LxWxH cm)	365x135x106	338x115x80	315x115x80	285x110x70	275x110x70	260x110x70	230x110x70	220x110x70	195x110x70	
PVC	Price**	3 960 €	3 285 €	2 925 €	2 715 €	2 475 €	2 355 €	2 265 €	2 115 €	2 055 €
Hypalon	Price**	5 550 €	4 830 €	4 275 €	3 540 €	3 135 €	2 985 €	2 880 €	2 715 €	2 625 €
Integrated fuel tank		50 L	35 L	35 L	21 L	21 L	21 L	21 L	21 L	21 L
Tube cover (option)		585 €	563 €	525 €	480 €	458 €	435 €	420 €	390 €	368 €

Available colors :

PVC :  Olive / White

 Medium grey

Hypalon :  Medium grey

* In tropical climate areas the use of 3D TENDER PVC boats are excluded from warranty.

** A variation of +/- 10% is possible on all announced weights - ** Prices VAT included without shipping cost

Prices and technical data subject to change without notice.



SURFACE RIB Aluminium

Speed, comfort and reliability !

New model designed in a collaboration with the french naval architect Tanguy Le Bihan. The Surface model is designed with a new more than 40 degrees progressive V hull. This specific hull shape has been thought and developed to offer a better boat speed and the navigation confort.

STANDARD EQUIPMENT

- Fabric PVC welded seams
- Anti corrosion treated aluminum hull
- Marine powder paint on aluminum
- Double front storage box
- Lifting and towing U-bolts integrated in the hull
- Anti-slip Eva pad covering entire deck
- Ultra wide chafing band
- Protection bow
- Aluminum bench
- Pump, oars
- Repair kit

OPTIONS



Console / Pilot Seat : 915€^{VAT inc.}

Tube protection cover 

Cover colors: Grey (grey hull) or beige (white hull)



Double front box with the 21L fuel tank



New hull design
Over 40° of progressive V



Available colors :

PVC :  Olive / White  Medium grey

Hypalon :  Medium grey

Model	SF 330	
Overall length (cm)	330	
Overall beam (cm)	162	
Inside length (cm)	246	
Inside beam (cm)	80	
Hull angle (degree)	-	
Aluminium Thickness (cm)	0,3	
Total weight* (Kg)	70	
Category	D	
Maximum number of passengers	6	
Maximum load (Kg)	-	
Tube (cm)	41	
Shaft	Short	
Maximum power	25 HP	
Fuel Tank	21 L	
Front trunk	Double	
Package dimensions (LxIxh cm)	290x1145x78	
PVC	Price**	3 030 €
Hypalon	Price**	3 750 €
Tube cover	Price**	503 €

* In tropical climate areas the use of 3D TENDER PVC boats are excluded from warranty.

** A variation of +/- 10% is possible on all announced weights - ** Prices VAT included without shipping cost

Prices and technical data subject to change without notice.



DREAM 340

Our this years new Dream 340 model is PVC welded boat with alluminium hull treated with anti corrosion products for the longer durancy of the boat. It also includes the low console and bench. The Dream includes the self-bailing deck, a fuel tank of 25L, an anchorage with the cussion cover for seating, a U-bolts of lifting and towing integrated in the hull


For your comfort the deck of the Dream 340 is covered with the anti slipping pads. The boat is perfectly designed for the leisure activities. Comfort, stability and reactivity are the main points of our new model Dream 340.

STANDARD EQUIPMENT

- Fabric PVC welded seams
- Anti corrosion treated aluminum hull
- Marine paint powder used for aluminum
- Front storage
- Lifting and towing U-bolts integrated in the hull
- Anti-slip Eva pad covering entire deck
- Ultra wide chafing band
- Protection bow
- Pump, repair kit, oars



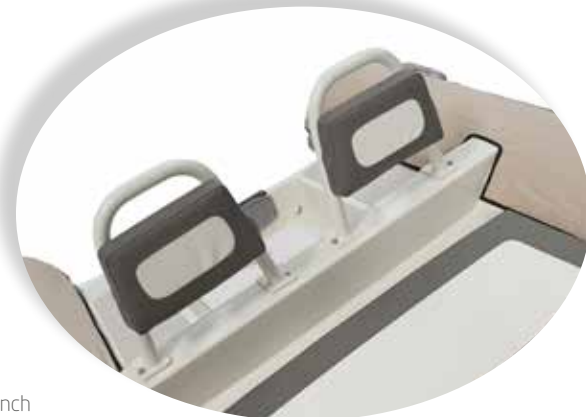
Options

Removable tube protection cover 
Cover colors: Grey (grey hull) or beige (white hull)

Price: 473€



Aluminium hull treated with anticorrosion



2 place bench



Rear bench and storing box

Model		DREAM 340
Length (CM)		340
Overall beam (cm)		214
Maximum authorised load		500KG
Total weight(KG)		98
Number of airtight chambers		4
Shaft		Long
Maximum power (CH/KW)		30 HP
PVC	Prix TTC	4 695 €
Hypalon	Prix TTC	6 135 €

Available colors :

PVC :  Olive / White  Medium grey

Hypalon :  Medium grey

* In tropical climate areas the use of 3D TENDER PVC boats are excluded from warranty.

** A variation of +/- 10% is possible on all announced weights - ** Prices VAT included without shipping cost

Prices and technical data subject to change without notice.



XPRO Heavy Duty

The **XPRO Heavy Duty** range is available in seven different sizes all made in PVC thermo-welded or glued hot and offers an inflatable V-shaped hull with a removable aluminum floor.

This range offers an excellent compromise between comfort and safety, a quick start and a surprising interior space.

Comfortable and versatile boat for excursions, fishing trips or diving.

Partner at all the times!

STANDARD EQUIPMENT

- Fabric PVC glued or welded seams
- Anchor well
- Cover entire wintering
- 2 adjustable benches
- 2 oars
- 2 carrying bags
- 2 storage bags under the bench
- Pump
- Repair kit





Available color :



Black

Model	HD 550	HD 500	HD 460	HD 420	HD 380	HD 360	HD 320
Overall length (cm)	550	500	460	420	380	360	320
Overall beam (cm)	208	193	190	190	170	168	151
Total weight* (Kg)	130	118	98	88	78	68	56
Max. passengers	10	9	8	7	6	5	5
Max load (Kg)	1 300	1 200	1 100	1 087	727	689	566
Tube (cm)	55	55	50	50	45	45	42
Number of airtight chambers	4+1	4+1	4+1	3+1	3+1	3+1	3+1
Shaft	Long	Long	Short	Short	Short	Short	Short
Max. power	45 HP	45 HP	40 HP	30 HP	20 HP	20 HP	15 HP
Dimensions en bag (cm)	149x79x49	133x69x39	133x69x39	131x66x39	121x66x38	107x66x38	107x66x38
PVC	Price**	3 300 €	3 015 €	2 580 €	2 220 €	2 010 €	1 695 €



* In tropical climate areas the use of 3D TENDER PVC boats are excluded from warranty.
 ** A variation of +/- 10% is possible on all announced weights - ** Prices VAT included without shipping cost
 Prices and technical data subject to change without notice.



Carrying backpack



SUPERLIGHT TWIN AIR

3D TENDER developed the SUPERLIGHT TWIN AIR range to fulfill the need of the leisure boaters. It has been built with a high pressure floor which is a specific honeycomb construction fabric. Used materials ensures the best balance between superlight weight, durability and ease of use. Storage on transportation is simple thanks to an adapted backpack.

MIN WEIGHT
9,6 KG!



STANDARD EQUIPMENT

- High pressure inflatable floor with honeycomb construction
- Aluminium bench
- Oars
- Pump
- Repair kit
- Backpack for storage and transportation

Model	TWA290	TWA270	TWA250	TWA230	TWA200	TWA180	TWA160
Overall length (cm)	290	270	250	230	200	180	160
Overall beam (cm)	136	135	135	134	131	129	129
Inside length (cm)	234	215	195	177	145	126	106
Inside beam (cm)	67	67	67	66	63	62	61
Total weight* (Kg)	16,9	15,8	14,5	13,8	11,9	10,8	9,6
Max. passengers	4	3,5	3	2	2	1,5	1
Max load (Kg)	510	484	450	350	250	200	180
Tube (cm)	34-40	34-40	34-40	32-36	32-35	32-35	30
Number of airtight chambers	3+1	3+1	3+1	2+1	2+1	2+1	2+1
Shaft	Short	Short	Short	Short	Short	Short	Short
Max. power	10 HP	7.5 HP	7.5 HP	4 HP	3.5 HP	3.5 HP	2.5 HP
Dimensions in bag (cm)	98x48x28	98x48x28	98x48x28	90x45x28	90x45x28	90x45x28	90x45x26
PVC	Price**	1 035 €	975 €	870 €	780 €	720 €	615 €



Carrying backpack

MIN WEIGHT
6,5 KG!



SUPERLIGHT TWIN ROUND AIR

To produce our Superlight twin round air we are using the premium extra light material. By removing the rear rigid panel we gave a new design and concept to SUPERLIGHT TWIN ROUND AIR. It is the lightest tender available in the market. Once folded, it is also the smallest one that fits into the smallest trunks.

STANDARD EQUIPMENT

- High pressure inflatable honeycomb construction floor
- Motor support
- Aluminium bench
- Oars
- Pump
- Repair kit
- Backpack for storage and transportation

Model	TWRA250	TWRA235	TWRA200	TWRA180	TWRA160
Overall length (cm)	250	235	200	180	160
Overall beam (cm)	133	133	114,5	101,5	100,5
Inside length (cm)	178	163	134	123	103
Inside beam (cm)	61	61	48,5	44,5	43,5
Total weight* (Kg)	12,2	11,8	9,2	7	6,5
Max. passengers	3	2	1,5	1	1
Max load (Kg)	400	350	250	200	180
Tube (cm)	36	36	33	28,5	28,5
Number of airtight chambers	2	2	2	2	2
Shaft	Short	Short	Short	Short	Short
Max. power	6 HP	5 HP	3.5 HP	2.5 HP	2 HP
Dimensions in bag (cm)	70x45x32	70x45x32	70x45x30	70x45x27	70x45x26

PVC Price** 825 € 720 € 690 € 638 € 578 €

Available colors : White Black

* In tropical climate areas the use of 3D TENDER PVC boats are excluded from warranty.

** A variation of +/- 10% is possible on all announced weights - ** Prices VAT included without shipping cost

Prices and technical data subject to change without notice.



MIN WEIGHT
19 KG!



Neoprene protection cover

SUPERLIGHT TWIN VIB AIR

With its V-shaped inflatable hull, the Superlight Twin Vib Air has been designed for boaters who look for a speed and comfort especially in difficult weather conditions. The tender is delivered with 2 protective covers in neoprene, one in black and one in white.

STANDARD EQUIPMENT

- High pressure inflatable honeycomb construction floor
- 2 protective cover in neoprene
- Aluminium bench
- Oars
- Pump
- Repair kit
- Storage bag

Model	TWVA330	TWVA300	TWVA280	TWVA250	TWVA210	
Overall length (cm)	330	300	280	250	210	
Overall beam (cm)	153	153	153	150	131	
Inside length (cm)	216	185	183	155	140	
Inside beam (cm)	68	68	68	68	60	
Total weight* (Kg)	34	29	25	22	19	
Max. passengers	4,5	4	4	3	2	
Max load (Kg)	566	510	500	450	250	
Tube (cm)	42	42	42	42	36	
Number of airtight chambers	3+1	3+1	3+1	2+1	2+1	
Shaft	Short	Short	Short	Short	Short	
Max. power	15 HP	10 HP	10 HP	6 HP	3.5 HP	
Dimensions in bag (cm)	90x45x40	90x45x35	90x45x32	90x45x30	90x45x28	
PVC	Price**	1 499 €	1 185 €	1 080 €	975 €	878 €



MIN WEIGHT
19 KG!



Storage backpack

WORLD TRAVEL

3D TENDER developed a special range to fulfill the expectations of pleasure boaters. It has been built up with conical tubes that will bring a maximum of floatability. Once the boat is deflated the storage and transportation to the adapted backpack is very easy and simple.

STANDARD EQUIPMENT

- Slatted floor
- Aluminium bench
- Oars
- Pump
- Repair kit
- Backpack for storage and transportation

Model	WT235	WT200	
Overall length (cm)	235	200	
Overall beam (cm)	131	131	
Inside length (cm)	183	147	
Inside beam (cm)	60	60	
Total weight* (Kg)	21	19	
Max. passengers	3	3	
Max load (Kg)	350	350	
Tube (cm)	37-32	37-32	
Number of airtight chambers	2	2	
Shaft	Short	Short	
Max. power	4 HP	4 HP	
Dimensions in bag (cm)	98x49x35	98x49x35	
PVC	Price**	413 €	390 €

OPTION FOR FOLDABLE TENDERS

Dinghy wheels
99 €^{VAT inc.}



Available color :  Black

* In tropical climate areas the use of 3D TENDER PVC boats are excluded from warranty.
* A variation of +/- 10% is possible on all announced weights - ** Prices VAT included without shipping cost

Prices and technical data subject to change without notice.



Inflatable V-shaped hull

Storage backpack

TWIN V-Shape

A new tender with high pressure Drop Stitch floor forming a V-shape offers an excellent seaworthiness.

Inflatable, ultra rigid but light with V-Shape hull, the TWIN V-Shape is without any doubt the best product of our tender range.

STANDARD EQUIPMENT

- High pressured V-Shaped Drop Sitch floor
- Aluminium bench
- Pump
- Repair kit
- Oars
- 4 inox lifting points
- Backpack for storage and transportation

Model	TwV290	TwV270	TwV250	TwV230	TwV200	TwV180	TwV160	
Overall length (cm)	290	270	250	230	200	180	160	
Overall beam (cm)	136	135	135	134	131	129	129	
Inside length (cm)	234	215	195	177	145	126	106	
Inside beam (cm)	67	67	67	66	63	62	61	
Total weight* (Kg)	20,3	18,9	17,4	16,6	14,3	12,9	11,5	
Max. passengers	4	3,5	3	2	2	1,5	1	
Max load (Kg)	510	484	450	350	250	200	180	
Tube (cm)	34-40	34-40	34-40	32-36	32-35	32-35	30	
Shaft	Short	Short	Short	Short	Short	Short	Short	
Max. power	10 HP	7.5 HP	7.5 HP	4 HP	3.5 HP	3.5 HP	2.5 HP	
Dimensions in bag (cm)	98x48x28	98x48x28	98x48x28	90x45x28	90x45x28	90x45x28	90x45x26	
PVC	Price**	1 133 €	1 065 €	968 €	870 €	725 €	765 €	720 €





TWIN Hypalon

New tender constructed with Hypalon tube and a removable aluminium floor makes this tender very durable.

The hull is also designed with an inflatable keel that creates a V-Shape for great seaworthiness in all conditions.

STANDARD EQUIPMENT

- Removable Aluminium floor
- Inflatable keel
- Aluminium bench
- Pump
- Repair kit
- Oars
- Backpack for storage and transportation

Sac à dos de transport



Model	TWH290	TWH270	TWH250	TWH230	
Overall length (cm)	290	270	250	230	
Overall beam (cm)	136	135	135	134	
Inside length (cm)	234	215	195	177	
Inside beam (cm)	67	67	67	66	
Total weight* (Kg)	23,4	22,3	21	20,3	
Max. passengers	4	3,5	3	2	
Max load (Kg)	510	484	450	350	
Tube (cm)	34-40	34-40	34-40	32-36	
Shaft	Short	Short	Short	Short	
Max. power	10 HP	7.5 HP	7.5 HP	4 HP	
Dimensions in bag (cm)	98x48x38	98x48x38	98x48x38	90x45x38	
Hypalon	Price**	2 205 €	2 100 €	1 995 €	1 860 €

Available colors :  Grey / White

* In tropical climate areas the use of 3D TENDER PVC boats are excluded from warranty.
 * A variation of +/- 10% is possible on all announced weights - ** Prices VAT included without shipping cost

Prices and technical data subject to change without notice.



Available colors :



Olive / White



Black / Light grey



Dark grey / Light grey



Orange / White



Pink / White



SELF DRAINING SYSTEM



Inflatable catamaran hull

TWIN FASTCAT

New conception of inflatable tenders with the catamaran style that offers an excellent stability and unmatched speed with low power engine.

First world wide Twin Fastcat tenders includes a self draining system.

The floor is constructed with the Drop Stitch technology and are inflatable up to 1 BAR of pressure that gives an extrem rigidity.



Storage backpack



STANDARD EQUIPMENT

- High pressured drop stitch floor
- Eva pads
- Aluminium bench
- Pump
- Repair kit
- Oars
- Backpack for storage and transport

Model	TWC330	TWC300	TWC280	TWC260	TWC230	TWC200
Overall length (cm)	330	300	280	260	230	200
Overall beam (cm)	172	166	166	158	153	148
Inside length (cm)	261	233	213	190	160	132
Inside beam (cm)	74	68	70	65	64	63
Total weight* (Kg)	40	38	36	34	28	25.3
Max. passengers	4	4	4	3,5	3	2
Max load (Kg)	566	510	484	450	350	250
Tube (cm)	48-30	48-29	48-29	45-29	42-29	42-29
Shaft	Short	Short	Short	Short	Short	Short
Max. power	15 HP	10 HP	8 HP	6 HP	6 HP	6 HP
Dimensions in bag (cm)	100x65x45	100x65x40	100x60x40	100x60x40	100x55x35	100x55x35
PVC	Price** 1 185 €	1 080 €	1 028 €	983 €	930 €	878 €

* In tropical climate areas the use of 3D TENDER PVC boats are excluded from warranty.

* A variation of +/- 10% is possible on all announced weights - ** Prices VAT included without shipping cost

Prices and technical data subject to change without notice.



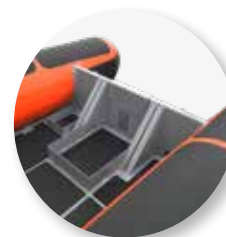
RESCUE BOAT

A boat provided with 100% self-draining system and extra reinforcements dedicated to professionals.

Boat specially design for an intensive use, equipped with an ultra reinforced aluminium hull included with 100% self-draining system. The position of the liferopes and all the reinforcements have been specially studied to guaranty the optimal longevity. The Rescue boat is therefor perfectly adapted to professional use.

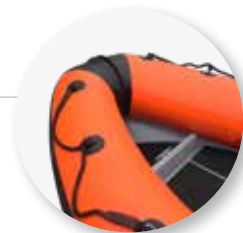
STANDARD EQUIPMENT

- Reinforced aluminium hull
- Self-draining system
- Tissu PVC
- Special adapted placement for fuel tank and battery
- U-bolts of lifting and towing integrated to the hull
- Anti-skid EVA pads on deck
- Ultra wide chafing band
- Protection bow
- Reinforced transom
- Pump, Oars
- Repair kit




Adapted space for fuel tank and battery

Front separation for anchorage





Model	430	370
Overall length (cm)	430	370
Overall beam (cm)	187	156
Inside beam (cm)	89	68
Bow locker width (cm)	60	57
Stern height (cm)	103	89
Bow height (cm)	67	58
Total weight* (Kg)	126	75
Max. passengers	8	6
Tube (cm)	50	45
Nb. of airtight chambers	4	3
Shaft	Long	Short
Max. power	60 HP	25 HP
Front trunk	Separation	Separation
PVC	Price** 5 715 €	4 335 €
Hypalon	Price** 7 785 €	6 500 €

Available color :  Orange

* In tropical climate areas the use of 3D TENDER PVC boats are excluded from warranty.
 * A variation of +/- 10% is possible on all announced weights - ** Prices VAT included without shipping cost
 Prices and technical data subject to change without notice.

3D TENDER ACCESSORIES



SEAT - REAR TRUNK L	REF: A01
Length (cm)	80
Width (cm)	50
Seat height (cm)	44
Total height (cm)	90
Price*	668 €

For PATROL 530, 550, XPRO 535, 490, 445, 420.



JOCKEY SEAT PILOT	REF: A04
Length (cm)	69
Width (cm)	33
Seat height (cm)	68
Total height (cm)	96
Price*	623 €

For PATROL & XPRO RIB all sizes.



BOLSTER SEAT L	REF: A07
Length (cm)	40
Width (cm)	65
Seat height (cm)	-
Total height (cm)	75
Price*	870 €

Standard on PATROL 600, 550, and XPRO 589



SEAT - REAR TRUNK XL	REF: A02
Length (cm)	92
Width (cm)	52
Seat height (cm)	58
Total height (cm)	90
Price*	885 €

For PATROL 650, 600 - XPRO 589.



JOCKEY SEAT WINGS	REF: A05
Length (cm)	69
Width (cm)	33
Seat height (cm)	57
Total height (cm)	96
Price*	855 €

For PATROL & XPRO RIB all sizes.



BOLSTER SEAT XL	REF: A08
Length (cm)	40
Width (cm)	85
Seat height (cm)	-
Total height (cm)	75
Price*	975 €

Standard on PATROL 650



JOCKEY SEAT	REF: A03
Length (cm)	53
Width (cm)	35
Seat height (cm)	57
Total height (cm)	96
Price*	623 €

For PATROL & XPRO RIB all sizes.



JOCKEY SEAT DOUBLE	REF: A06
Length (cm)	112
Width (cm)	33
Seat height (cm)	68
Total height (cm)	99
Price*	1 133 €

For PATROL & XPRO RIB all sizes.



LEANING POST	REF: A13
Length (cm)	42
Width (cm)	50
Total height (cm)	83
Price*	623 €

Standard on PATROL 530 & 560.



BOLSTER SEAT FISHING	REF: A28
Length (cm)	70
Width (cm)	75
Seat height (cm)	-
Total height (cm)	82
Price*	2 565 €

Fishtank, 3 rod holders and foldable table included



CONSOLE FRONT TRUNK XL	REF: A10
Length (cm)	95
Width (cm)	85
Seat height (cm)	-
Total height (cm)	180
Price*	1 535 €

Standard on PATROL 650



SEAT CONSOLE ALUMINIUM	REF: A21
Length (cm)	114
Width (cm)	70
Seat height (cm)	45
Total height (cm)	78
Price*	915 €



CONSOLE FISHING	REF: A27
Length (cm)	125
Width (cm)	85
Seat height (cm)	-
Total height (cm)	195
Price*	2 055 €



CONSOLE FRONT TRUNK	REF: A11
Length (cm)	83
Width (cm)	62
Seat height (cm)	46
Total height (cm)	149
Price*	930 €

Standard on PATROL 530 & 560



CONSOLE JOCKEY DOUBLE ALUMINIUM	REF: A32
Length (cm)	180
Width (cm)	30
Seat height (cm)	46
Total height (cm)	86
Price*	915 €



CONSOLE FRONT TRUNK L	REF: A09
Length (cm)	95
Width (cm)	67
Seat height (cm)	-
Total height (cm)	180
Price*	1 385 €

Standard on PATROL 600, 550
Option on XPRO 589.



CONSOLE	REF: A26
Length (cm)	45
Width (cm)	62
Total height (cm)	147
Price*	810 €



PACK CONSOLE TENDER ULTIMATE	REF: A33
Length (cm)	125
Width (cm)	45
Seat height (cm)	83
Total height (cm)	95
Price*	1530 €

Prices and technical data subject to change without notice.

* Prices VAT included without shipping costs



ULTIMATE BENCH (DE 260 A 360)	REF: A34
Length (cm)	114
Width (cm)	70
Seat height (cm)	45
Total height (cm)	78
Price*	645 €



CONSOLE JOCKEY XL	REF: A37
Length (cm)	NC
Width (cm)	NC
Seat height (cm)	60
Total height (cm)	NC
Price*	1 230 €



ROLL BAR XPRO
REF: A17
 For XPRO 589, 535,
 490, 445
720 €*



CONSOLE (PATROL 760, 670)	REF: A35
Length (cm)	45
Width (cm)	82
Total height (cm)	148
Price*	1530 €



ROLL BAR SIMPLE
REF: A15
 For PATROL all sizes
413 €*



ROLL BAR STEALTH
REF: A31
720 € TTC*



CONSOLE JOCKEY L	REF: A36
Length (cm)	NC
Width (cm)	NC
Seat height (cm)	45
Total height (cm)	NC
Price*	1 020 €



ROLL BAR PATROL
REF: A16
 For PATROL all sizes
720 €*



SEAT ROLL BAR
XPRO REF: A30
1 020 € TTC*



**SEAT ROLL BAR
STEALTH REF: A29**

1 020 €^{TTC*}



**DINGHY WHEELS
REF: A22**

104 €*



**FISHING ROD HOLDER -
5 RODS REF: A20**

For roll bar & tip top
270 €*



TIP TOP	REF: A14
Length (cm)	160
Width (cm)	130
Total height (cm)	190
Console max. width (cm)	114
Price*	1440 €

For PATROL & XPRO



**FISHING ROD HOLDER
REF: A18**

For roll bar & tip top
74 €*



**WHEELS
REF: A40**
Aluminium

188 €^{TTC*}



**BOX TIPTOP
REF: A25**

For tip top
315 €*



**DOUBLE FISHING
ROD HOLDER REF: A19**

For roll bar & tip top
104 €*



TRIPLE BENCH REF: A41
1 754 €^{TTC*}

PACK BOAT + MOTOR

PRICE VAT INCLUDED without transportation costs



XPRO Heavy Duty	PACK 2,5 HP	PACK 6 HP	PACK 9.9 HP	PACK 15 HP	PACK 20 HP	PACK 25 HP	PACK 30 HP
XPRO Heavy Duty 320	2 438 €	3 004 €	4 424 €	4 829 €	5 152 €		
XPRO Heavy Duty 360	2 631 €	3 198 €	4 619 €	5 023 €	5 346 €		
XPRO Heavy Duty 380	2 728 €	3 296 €	4 716 €	5 120 €	5 443 €		
XPRO Heavy Duty 420	2 922 €	3 489 €	4 910 €	5 323 €	5 637 €		
XPRO Heavy Duty 460	3 262 €	3 828 €	5 248 €	5 653 €	5 976 €	6 380€	
XPRO Heavy Duty 500	3 678 €	4 245 €	5 666 €	6 070 €	6 393 €	6 798 €	
XPRO Heavy Duty 550	3 939 €	4 507 €	5 927 €	6 332 €	6 654 €	7 059 €	

XPRO RIB Aluminium	PACK 2,5 HP	PACK 6 HP	PACK 9.9 HP	PACK 15 HP	PACK 20 HP	PACK 25 HP	PACK 30 HP
XPRO RIB Alu 390 - PVC	3 552 €	4 120 €	5 540 €	5 944 €	6 267 €	6 671 €	
XPRO RIB Alu 390 - Hypalon	5 297 €	5 864 €	7 285 €	7 688 €	8 012 €	8 416 €	
XPRO RIB Alu 415 - PVC	3 746 €	4 313 €	5 734 €	6 138 €	6 461 €	6 864 €	
XPRO RIB Alu 415 - Hypalon	5 685 €	6 252 €	7 672 €	8 077 €	8 399 €	8 804 €	
XPRO RIB Alu renf. 420 - PVC	5 297 €	5 864 €	7 285 €	7 688 €	8 012 €	8 416 €	
XPRO RIB Alu renf. 420 - Hyp	7 624 €	8 190 €	9 611 €	10 015 €	10 339 €	10 742 €	

ULTRA LIGHT	PACK 2,5 HP	PACK 6 HP	PACK 9.9 HP	PACK 15 HP	PACK 20 HP	PACK 25 HP	PACK 30 HP
ULTRA LIGHT 250 - PVC	2 477 €	3 044 €					
ULTRA LIGHT 250 - Hypalon	2 962 €	3 528 €					
ULTRA LIGHT 270 - PVC	2 573 €	3 141 €	4 561 €				
ULTRA LIGHT 270 - Hypalon	3 252 €	3 820 €	5 240 €				
ULTRA LIGHT 290 - PVC	2 709 €	3 277 €	4 697 €	5 101 €			
ULTRA LIGHT 290 - Hypalon	3 446 €	4 013 €	5 434 €	5 839 €			
ULTRA LIGHT 310 - PVC	2 817 €	3 383 €	4 803 €	5 208 €			
ULTRA LIGHT 310 - Hypalon	3 601 €	4 169 €	5 589 €	5 993 €			
ULTRA LIGHT 330 - PVC	2 962 €	3 528 €	4 950 €	5 353 €	5 677 €		
ULTRA LIGHT 330 - Hypalon	3 786 €	4 352 €	5 774 €	6 177 €	6 501 €		
ULTRA LIGHT 360 - PVC	3 301 €	3 868 €	5 289 €	5 693 €	6 016 €		
ULTRA LIGHT 360 - Hypalon	4 173 €	4 741 €	6 161 €	6 566 €	6 888 €		

ULTIMATE RIB Aluminium	PACK 2,5 HP	PACK 6 HP	PACK 9.9 HP	PACK 15 HP	PACK 20 HP	PACK 25 HP	PACK 30 HP
ULTIMATE 240 - PVC	2 768 €	3 335 €					
ULTIMATE 240 - Hypalon	3 311 €	3 877 €					
ULTIMATE 260 - PVC	2 826 €	3 393 €	4 814 €				
ULTIMATE 260 - Hypalon	3 408 €	3 974 €	5 396 €				
ULTIMATE 280 - PVC	2 962 €	3 528 €	4 950 €	5 353 €			
ULTIMATE 280 - Hypalon	3 543 €	4 110 €	5 531 €	5 935 €			
ULTIMATE 300 - PVC	3 059 €	3 625 €	5 047 €	5 450 €	5 774 €		
ULTIMATE 300 - Hypalon	3 641 €	4 207 €	5 627 €	6 032 €	6 355 €		

ULTIMATE RIB Aluminium	PACK 2,5 HP	PACK 6 HP	PACK 9.9 HP	PACK 15 HP	PACK 20 HP	PACK 25 HP	PACK 30 HP
ULTIMATE 320 - PVC	3 165 €	3 732 €	5 153 €	5 557 €	5 880 €		
ULTIMATE 320 - Hypalon	3 786 €	4 352 €	5 774 €	6 177 €	6 501 €		
ULTIMATE 340 - PVC	3 397 €	3 965 €	5 385 €	5 790 €	6 113 €		
ULTIMATE 340 - Hypalon	4 173 €	4 741 €	6 161 €	6 566 €	6 888 €		
ULTIMATE 360 - PVC	3 592 €	4 159 €	5 579 €	5 984 €	6 306 €		
ULTIMATE 360 - Hypalon	4 852 €	5 419 €	6 840 €	7 243 €	7 567 €		
ULTIMATE 390 - PVC	3 931 €	4 499 €	5 919 €	6 323 €	6 646 €	7 050 €	
ULTIMATE 390 - Hypalon	5 385 €	5 952 €	7 373 €	7 777 €	8 099 €	8 504 €	
ULTIMATE 420 - PVC	4 610 €	5 176 €	6 598 €	7 001 €	7 325 €	7 729 €	
ULTIMATE 420 - Hypalon	6 064 €	6 631 €	8 051 €	8 456 €	8 778 €	9 183 €	

STEALTH RIB Aluminium	PACK 2,5 HP	PACK 6 HP	PACK 9.9 HP	PACK 15 HP	PACK 20 HP	PACK 25 HP	PACK 30 HP
STEALTH 360 - PVC	3 989 €	4 556 €	5 977 €	6 381 €	6 704 €	7 109 €	
STEALTH 360 - Hypalon	5 153 €	5 719 €	7 140 €	7 544 €	7 868 €	8 271 €	
STEALTH 390 - PVC	4 513 €	5 079 €	6 501 €	6 905 €	7 227 €	7 632 €	9 165 €
STEALTH 390 - Hypalon	5 928 €	6 495 €	7 916 €	8 320 €	8 643 €	9 047 €	10 581 €
STEALTH 420 - PVC	5 579 €	6 147 €	7 567 €	7 971 €	8 294 €	8 698 €	10 233 €
STEALTH 420 - Hypalon	7 130 €	7 697 €	9 118 €	9 522 €	9 845 €	10 249 €	11 783 €
STEALTH 460 - PVC	6 025 €	6 592 €	8 013 €	8 417 €	8 741 €	9 144 €	10 679 €
STEALTH 460 - Hypalon	7 770 €	8 337 €	9 758 €	10 161 €	10 485 €	10 889 €	12 423 €

SURFACE RIB Aluminium	PACK 2,5 HP	PACK 6 HP	PACK 9.9 HP	PACK 15 HP	PACK 20 HP	PACK 25 HP	PACK 30 HP
SURFACE 330 - PVC	5 249 €	5 817 €	7 237 €	7 641 €	7 964 €	8 368 €	
SURFACE 330 - Hypalon	6 607 €	7 173 €	8 594 €	8 999 €	9 321 €	9 726 €	

SLIDING	PACK 2,5 HP	PACK 6 HP	PACK 9.9 HP	PACK 15 HP	PACK 20 HP	PACK 25 HP	PACK 30 HP
SLIDING 300 PVC	3 641 €	4 207 €	5 627 €	6 032 €			
SLIDING 300 Hypalon							
SLIDING 360 PVC	3 834 €	4 401 €	5 822 €	6 226 €	6 549 €	6 953 €	8 487 €
SLIDING 360 Hypalon							

TWIN AIR	PACK 2,5 HP	PACK 6 HP	PACK 9.9 HP	PACK 15 HP	PACK 20 HP	PACK 25 HP	PACK 30 HP
TWIN AIR 160	1 419 €						
TWIN AIR 180	1 467 €						
TWIN AIR 200	1 516 €						
TWIN AIR 230	1 565 €						
TWIN AIR 250	1 662 €	2 229 €					
TWIN AIR 270	1 708 €	2 325 €					
TWIN AIR 290	1 755 €	2 374 €					

TWIN ROUND AIR	PACK 2,5 HP	PACK 6 HP	PACK 9.9 HP	PACK 15 HP	PACK 20 HP	PACK 25 HP	PACK 30 HP
TWIN ROUND AIR 160	1 381 €						
TWIN ROUND AIR 180	1 439 €						

TWIN ROUND AIR	PACK 2,5 HP	PACK 6 HP	PACK 9.9 HP	PACK 15 HP	PACK 20 HP	PACK 25 HP	PACK 30 HP
TWIN ROUND AIR 200	1 487 €						
TWIN ROUND AIR 235	1 516 €						
TWIN ROUND AIR 250	1 614 €						

TWIN VIB AIR			PACK 9.9 HP	PACK 15 HP	PACK 20 HP	PACK 25 HP	PACK 30 HP
TWIN VIB AIR 210	1 662 €	2 228 €					
TWIN VIB AIR 250	1 759 €	2 325 €					
TWIN VIB AIR 280	1 856 €	2 422 €	3 843 €				
TWIN VIB AIR 300	1 952 €	2 520 €	3 940 €				
TWIN VIB AIR 330	2 243 €	2 810 €	4 231 €	4 636 €			

WORLD TRAVEL	PACK 2,5 HP	PACK 6 HP	PACK 9.9 HP	PACK 15 HP	PACK 20 HP	PACK 25 HP	PACK 30 HP
WORLD TRAVEL 200	1 206 €						
WORLD TRAVEL 235	1 225 €						

TWIN V-Shape	PACK 2,5 HP	PACK 6 HP	PACK 9.9 HP	PACK 15 HP	PACK 20 HP	PACK 25 HP	PACK 30 HP
TWIN V-Shape 160	1 516 €						
TWIN V-Shape 180	1 556 €						
TWIN V-Shape 200	1 614 €						
TWIN V-Shape 230	1 653 €						
TWIN V-Shape 250	1 745 €	2 317 €					
TWIN V-Shape 270	1 847 €	2 414 €					
TWIN V-Shape 290	1 904 €	2 472 €	3 892 €				

TWIN Hypalon	PACK 2,5 HP	PACK 6 HP	PACK 9.9 HP	PACK 15 HP	PACK 20 HP	PACK 25 HP	PACK 30 HP
TWIN Hypalon 230	2 592 €	3 160 €					
TWIN Hypalon 250	2 719 €	3 286 €					
TWIN Hypalon 270	2 817 €	3 383 €					
TWIN Hypalon 290	2 914 €	3 480 €					

TWIN FAST CAT	PACK 2,5 HP	PACK 6 HP	PACK 9.9 HP	PACK 15 HP	PACK 20 HP	PACK 25 HP	PACK 30 HP
TWIN FASTCAT 200	1 662 €	2 229 €					
TWIN FASTCAT 230	1 710 €	2 277 €					
TWIN FASTCAT 260	1 759 €	2 325 €					
TWIN FASTCAT 280	1 807 €	2 374 €					
TWIN FASTCAT 300	1 856 €	2 422 €	3 844 €				
TWIN FASTCAT 330	1 952 €	2 520 €	3 940 €	4 344 €			



3D TENDER®

HIGH PERFORMANCE RESEARCH & DEVELOPMENT

3D MARINE - 520 route de Penetty - 29850 GOUESNOU - France

For more information:

www.3dtender.com - Contact: Mr. Olivier DALIDEC - Tel: (+33) 06 81 31 19 36

Email: international@3dtender.com

