



# DREAM 850

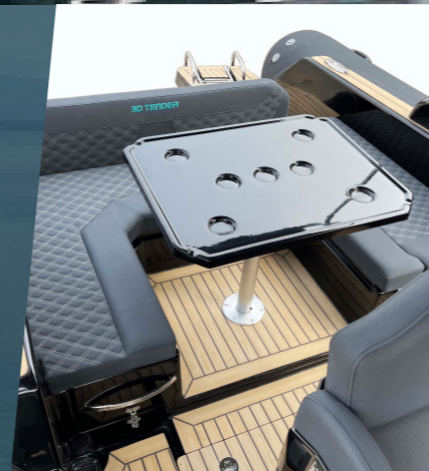
RIB'S  
FIBERGLASS HULL

The **DREAM 850** has been specially designed to combine performance and reactive driving.

Equipped with modern layout that can be adapted according to your desires. It reinterprets and reinvents the spaces on board to make it an outstanding pleasure boat.

The deep V hull is made of reinforced fiberglass, the deck is self-draining and the rear access platform to the sea with a bathing ladder allows an easy descent and ascent. Each model in the Dream range comes with a large sundeck with several storage lockers and a retractable picnic table.

The tubes are available in Valmex® PVC from the German company Melher® or in HYPALON ORCA® fabric from the company Pennel et Flipo, they contain 6 watertight compartments, 6 inflation valves and are protected by two double anti-drag strips.



## SPECIFICATIONS

Full length	8.45 m
Full length	7.40 m
Width	3.12 m
Interior width	2.40 m
Depth	1.50 m
Dead rise bow	14°
Tube diameter	63 cm
Air chambers	6
Weight	1180 kg
Tube inflation pressure	0.25 bar
Passengers	18
Maximum load weight	1850 kg
Maximum power	350 HP
Engine shaft	Simple XL
Design category	C
Fuel tank	300 L

**Hypalon Black / Gelcoat Black 49 900 € TTC**

**Hypalon Full option Black / Gelcoat Black 62 850 € TTC**

Dimensional and weight tolerances ±10%.

In tropical climates, the use of 3D TENDER PVC boats is excluded from the warranty. Prices and specifications are subject to change without notice.



## EQUIPMENT

### STANDARD

- Self-draining deck
- Back platform with a swim ladder
- 300 L fuel tank under the main deck
- Living space with picnic table convertible into a sundeck
- Back chest for the storage of the picnic table
- Console with storage
- Bolster for two adult seating with triple driving positions
- Four front lockers
- Front and back sundeck
- Electric windlass integrated into the bow roller
- 4 front storage lockers

- Retractable cleats
- Electric and automatic bilge pump 12V, 2000GPH
- Manual bilge pump and watertight circuit breaker

### OPTION

- Shower kit with pump and tank included
- Integrated small kitchen with sink in the pilot seat
- Flxiteek on the deck and the back access platforms
- Composite roll-bar with LED light
- Back and front double Bimini

